



NONPROFIT AND PHILANTHROPY
LEADERSHIP CONFERENCE & ANNUAL MEETING

UNITED *for* IMPACT

APRIL 9, 2026

Jackson Convention Complex

7:30 AM – 4:30 PM



Welcome Letter from Ellen

Dear Friends,

On behalf of the MS Alliance of Nonprofits and Philanthropy, welcome to our Leadership Conference and Annual Meeting—*United for Impact*. We are honored to have you join us and are deeply grateful for your continued commitment to strengthening Mississippi's nonprofit and philanthropic community.

Your presence here reflects something powerful: a shared belief that our work matters and that, together, we can shape a stronger future for our state. Whether you are a nonprofit leader, philanthropic partner, community advocate, or supporter of this sector, thank you for the role you play in advancing meaningful change across Mississippi.

During this conference, we invite you to lean into creativity and innovation - to think boldly and engage openly. Let this gathering be a space where new ideas take root, where partnerships are strengthened, and where a shared vision for the future begins to take shape. Together, nonprofits, philanthropy, and all who support this sector can create lasting, transformational impact.

As we begin our time together, let us pause to recognize and affirm one another. Your dedication, resilience, and leadership are what make Mississippi a better place to live, work, and thrive. The work is not always easy, but it is deeply meaningful—and it is making a difference every single day.

Thank you for being here. Thank you for the work you do. And thank you for being united in impact.

With gratitude,

Ellen Collins

Executive Director



CONFERENCE SCHEDULE

7:30–8:30 AM	Registration and breakfast	
8:30–8:45 AM	Welcome <i>3rd Floor Theatre</i>	Ellen Collins <i>Executive Director MS Alliance of Nonprofits and Philanthropy</i>
8:45–9:45 AM	Opening Speaker <i>3rd Floor Theatre</i>	Dr. Corey Wiggins <i>Federal Co-Chair Delta Regional Authority</i>
9:45–10:20 AM	Special Demonstrations and Vendors <i>2nd Floor Gallery</i>	
10:20–10:30 AM	Break & Transition	
10:30 AM–12:00 PM	Morning Breakouts <i>2nd Floor</i>	See Schedule
12:00–12:15 PM	Break & Transition	Vendor Visits & Networking
12:15–1:30 PM	Annual Meeting <i>2nd Floor Gallery</i>	
	Keynote Speaker <i>2nd Floor Gallery</i>	Tyeshia “Ty” Wilson <i>Senior Director of Community Philanthropy Together</i>
1:30–1:45 PM	Break & Transition	Vendor Visits & Networking
1:45–4:00 PM	Afternoon Breakouts <i>2nd Floor</i>	See Schedule
4:00–4:30 PM	Door Prizes and Closing <i>3rd Floor Theatre</i>	

BREAKOUTS

10:30 AM–12:00 PM

Hidden Treasures and Landmines in Your Financial Information

Jan Eastman | Owner, Mindshare of NE Mississippi

Room 207

Work Smarter, Govern Stronger: AI Tools and Policy for the Modern Nonprofit

Tiffany Carter-Washington | AI Lab Manager and Technical Advisor, MS Alliance of Nonprofits and Philanthropy

Room 209

Prove It: A Hands-On Logic Model Workshop

Jessica Abram, MPA | Founder, Bloom Education Group

Room 210

Regional Collaboration for Rural Impact: A Philanthropy Roundtable

Sherra Bennett | Senior Program Officer, The Winthrop Rockefeller Foundation

Nadia Villagrán | Rural LISC Director and LISC Vice President

Dr. Rhea Williams-Bishop | Director of Mississippi and New Orleans Programs, W.K. Kellogg Foundation

Lloyd Gray | Executive Director, The Phil Hardin Foundation

Dr. Corey Wiggins | Federal Co-Chair, Delta Regional Authority

Moderated by: Kim Davis | President, Carl B. and Florence E. King Foundation

Room 214A (Limited Seating)

1:45 PM–2:45 PM

Programs Create Proof. Systems Create Permanence: A Dual Investment Strategy for Educational Transformation

George Stewart II | Education Program Officer, Foundation for the Mid South

Room 207

Mission > Machine: Humanity in Nonprofit Marketing in the Age of AI

Peter Kelly | Founder, Ship To Shore Communications

Room 208

Key Shifts to Transform & Elevate Any Board

Eddrick Martin | CEO and Lead Strategist, Elevated Momentum Consulting, LLC

Room 209

Count Us In: Nonprofits and the 2030 Census

Lynn Woo | Associate Director, Center for Population Studies

Kyra Roby | Principal, Chase Gen Strategy Consultants, LLC

Room 210

3:00 PM–4:00 PM

Beyond “Paying It Forward”: Mentorship as Infrastructure for Mission Growth

Melvin L. Smith Jr., MPH | Ph.D. Student, Instructional Systems & Workforce Development

Room 207

Mission > Machine: Humanity in Nonprofit Marketing in the Age of AI

Peter Kelly | Founder, Ship To Shore Communications

Room 208

Key Shifts to Transform & Elevate Any Board (continued)

Eddrick Martin | CEO and Lead Strategist, Elevated Momentum Consulting, LLC

Room 209

Count Us In: Nonprofits and the 2030 Census (continued)

Lynn Woo | Associate Director, Center for Population Studies

Kyra Roby | Principal, Chase Gen Strategy Consultants, LLC

Room 210

UNITED *for* IMPACT

Dr. Corey Wiggins

Federal Co-Chair
Delta Regional Authority



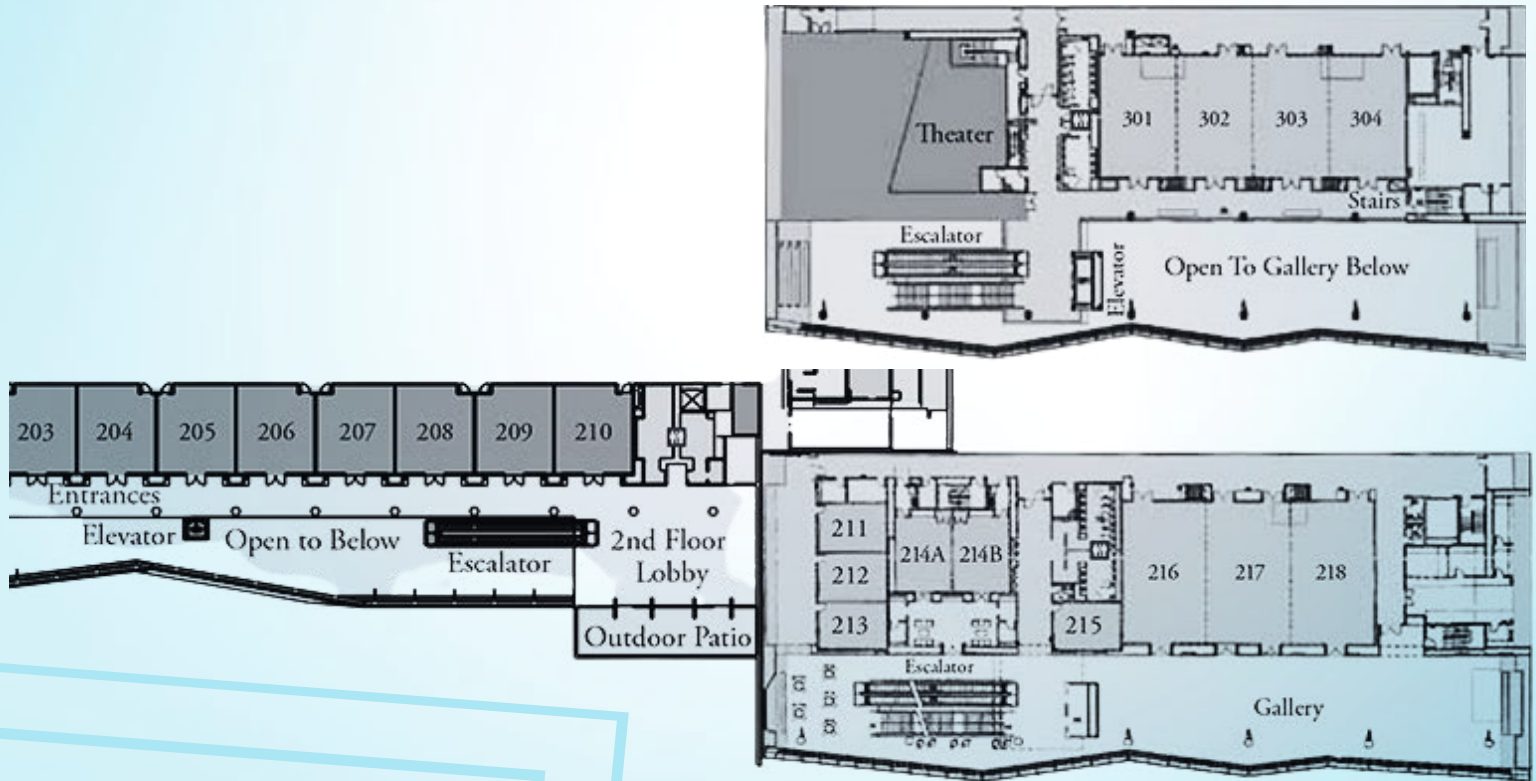
Opener

United in Purpose, Focused on Communities: Driving Collective Impact Through Alignment and Action

A Conversation with Dr. Corey Wiggins

Dr. Corey Wiggins will kick off the convening with a forward-looking charge on regional opportunity, cross-sector partnership, and what it takes to move communities from vision to implementation. He has served as the senior vice president of policy and evaluation at Hope Enterprise Corporation, where he held the position of executive director of the Mississippi Economic Policy Center and executive director of the Hope Policy Institute. He holds a certificate of nonprofit leadership from Boston College and has completed fellowships with the Kaiser Family Foundation, the W.K. Kellogg Foundation, and the Massachusetts Institute of Technology.

COMPLEX DIAGRAM



Morning BREAKOUTS

10:30 AM–12:00 PM

Hidden Treasures and Landmines in Your Financial Information

Jan Eastman | Owner, Mindshare of NE Mississippi

Powerful data is buried in your financial information...both treasures and landmines. This is what your potential funders, donors, and board members need to know. But before you can communicate your organization's financial status and needs with these people and your community, you need to have a basic understanding of the organization's financial data. This session will show how to 1) read financial statements; 2) use basic ratios to understand the organization's financial health, raise money, and market your nonprofit; 3) manage your cash flow; and (4) Identify problem areas to address.

Work Smarter, Govern Stronger: AI Tools and Policy for the Modern Nonprofit

Tiffiney Carter-Washington | AI Lab Manager and Technical Advisor, MS Alliance of Nonprofits and Philanthropy

Artificial intelligence is already being used across organizations—often without formal oversight—making responsible governance a critical leadership priority. This **interactive session** helps nonprofit leaders and teams identify key risks such as data privacy exposure, bias, and compliance concerns, while guiding them through drafting a practical, mission-aligned AI policy framework. Participants will leave with a working draft policy and a clear roadmap for responsible adoption.

Email overload drains time, focus, and productivity for today's professionals. This **hands-on session** shows how AI tools can quickly summarize messages, extract action items, prioritize requests, and draft concise responses—turning AI into a practical executive assistant. Participants will gain strategies to save time, reduce stress, and manage communication more efficiently using their own devices.

Prove It: A Hands-On Logic Model Workshop

Jessica Abram, MPA | Founder, Bloom Education Group

In a competitive 2026 landscape where “proof” is the currency that matters, many nonprofit leaders feel stuck reporting their level of effort, rather than telling a story of change. While organizations often focus on **outputs**—the direct, countable results like the number of coaching sessions held—funders are looking for a return on their social investment through **outcomes**.

This session, led by former teacher and program evaluation expert Jessica Abram, demystifies the bridge between activity and impact. Come with your team and bring a pen and paper: this is a hands-on working session where we will move beyond the “magic wand” of wishing for data. Together, we will build out your Logic Model, the visual blueprint required by sophisticated funders to prove the logical relationship between the resources you invest and the long-term community impact you achieve.

Regional Collaboration for Rural Impact: A Philanthropy Roundtable

Sherra Bennett | Senior Program Officer, The Winthrop Rockefeller Foundation

Nadia Villagrán | Rural LISC Director and LISC Vice President

Dr. Rhea Williams-Bishop | Director of Mississippi and New Orleans Programs, W.K. Kellogg Foundation

Lloyd Gray | Executive Director, The Phil Hardin Foundation

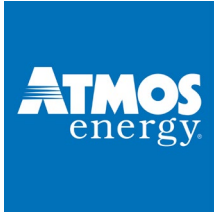
Dr. Corey Wiggins | Federal Co-Chair, Delta Regional Authority

Moderated by: Kim Davis | President, Carl B. and Florence E. King Foundation

In rural communities across the country, education, health, and workforce development are not separate or siloed systems — they are lived realities woven together in the same family’s experiences, often in the same week. Unfortunately, treating these as siloed funding categories yields siloed results, and no single foundation, nonprofit, or public agency can address structural challenges alone.

This conversation invites us to examine how we invest in integrated solutions that reflect how life is actually lived in rural communities — and what it looks like for philanthropy to work across the region while respecting the unique dynamics of more local contexts where the systems intersect.

SPONSORS



Supporting





ANNUAL MEETING *+ luncheon*

ANNUAL MEETING AGENDA

Welcome & Opening Remarks

Dr. Ann Marie Kinnell | Board Chair

Special Message

Cynthia Hines | Chief Program Officer

Awards & Recognition

Ellen Collins | Executive Director

Michael Martella | Program Associate

LUNCH SERVED

Keynote Speaker

Tyeshia "Ty" Wilson | Senior Director of Community, Philanthropy Together

Acknowledgements/Closing Remarks

Ellen Collins | Executive Director

ANNUAL MEETING *+ luncheon*

Dr. Ann Marie Kinnell

Chair
Board of Directors



Dr. Ann Marie Kinnell serves as Co-Director of the School of Interdisciplinary Studies and Professional Development and Director of the Nonprofit Studies Program at The University of Southern Mississippi, where she has led efforts to advance civic engagement and nonprofit education since 2007.

She holds a Ph.D. in Sociology from Indiana University–Bloomington. Her introduction to the nonprofit sector began with her doctoral research, which explored counseling practices at an HIV-testing nonprofit, where she also served as volunteer coordinator.

Dr. Kinnell's research focuses on the impact of service learning and civic engagement programs on both students and nonprofit community partners, as well as the dynamics between nonprofit and for-profit organizations. She is co-author of several case study books on nonprofit leadership, including *Nongovernmental Organizations: Case Studies in Leadership from Around the World* and *Leadership Cases in Community Nonprofit Organizations* (both 2nd editions, Kendall Hunt).

ANNUAL MEETING *+ luncheon*

Tyeshia “Ty” Wilson

*Senior Director of Community
Philanthropy Together*



Keynote

Tyeshia “Ty” Wilson will headline the day with an energizing keynote on the power of collective giving, community-led solutions, and how philanthropy can accelerate impact when we align resources with lived experience.

A sought-after speaker on collaborative and trust-based philanthropy, Ty is the visionary behind Philanthropy Together’s flagship Launchpad programs. A fierce advocate for collaborative, community-led philanthropy, Ty is an award-winning giving circle expert, a Certified Impact Philanthropy Advisor, and a masterful facilitator and community organizer dedicated to advancing equitable, trust-based grantmaking practices. She is also a 2022 Black Women Give Back honoree.

Afternoon BREAKOUTS

1:45 PM–2:45 PM

Programs Create Proof. Systems Create Permanence: A Dual Investment Strategy for Educational Transformation

George Stewart II | Education Program Officer, Foundation for the Mid South

Improving educational outcomes requires more than isolated programs or high-level policy reform. It requires intentional alignment between both. This session explores a dual investment strategy that integrates direct programmatic interventions with long-term systems change to drive measurable results.

Drawing from a five-year regional education strategy across Mississippi, Arkansas, and Louisiana, this presentation highlights how targeted investments in Grow-Your-Own teacher pipelines, educator retention, student supports, and Family Resource Centers are paired with policy advocacy, stakeholder convenings, and cross-sector collaboration to create sustainable impact.

Mission > Machine: Humanity in Nonprofit Marketing in the Age of AI

Peter Kelly | Founder, Ship To Shore Communications

Artificial intelligence is already embedded in marketing platforms, donor systems, and communication workflows across the nonprofit sector. The question is no longer whether to use AI. The question is how to use it without losing the humanity at the center of your mission.

In this bold and practical breakout session, Peter Kelly challenges nonprofit leaders to rethink AI as a strategic amplifier rather than a replacement for empathy. Through real-world examples, live demonstrations, and an actionable evaluation framework, participants will learn how to integrate AI into marketing and storytelling while protecting dignity, trust, and authenticity.

Key Shifts to Transform & Elevate Any Board

Eddrick Martin | CEO and Lead Strategist, Elevated Momentum Consulting, LLC

Discover essential strategies to elevate your nonprofit board's performance in this interactive workshop. Participants will learn proven frameworks for building board growth, engagement, accountability, and ownership. The session includes practical templates, sample policies, and data-backed best practices.

Attendees will leave with a toolkit to strengthen board culture, improve retention, and advance the organization's mission. This session is tailored for nonprofit executives and board leaders seeking concrete steps and resources to advance their board development goals.

Count Us In: Nonprofits and the 2030 Census

Lynn Woo | Associate Director, Center for Population Studies
Kyra Roby | Principal, Chase Gen Strategy Consultants, LLC

Supported by



An inaccurate census costs Mississippi communities real dollars and real representation. This training unpacks exactly how census data drives funding and resources to the state's most vulnerable populations and exposes the myths keeping people from participating. Walk away with a deeper understanding of what's at stake, the facts to counter misinformation, and a concrete plan to activate your networks and champion a full and accurate count.

3:00 PM–4:00 PM

Beyond “Paying It Forward”: Mentorship as Infrastructure for Mission Growth

Melvin L. Smith Jr., MPH | Ph.D. Student, Instructional Systems & Workforce Development

Care and compassion are central to nonprofit missions and to the people who lead them. But how can organizations not only serve their communities but also build their long-term capacity?

This session challenges nonprofit leaders to rethink mentorship not as a standalone program but as an intentional infrastructure that develops talent pipelines, reinforces organizational capacity, and sustains mission growth. Drawing on peer-reviewed research best practices and a case study of a nonprofit that embedded a student-led partnership into its leadership structure, this session examines how removing barriers, structured engagement, and cross-sector collaboration produced measurable outcomes that strengthened both community talent and organizational relevance.

Participants will leave with a practical framework and diagnostic toolkit to evaluate their current mentorship approach and identify opportunities to build stronger pathways into, through, and beyond their organizations.

Mission > Machine: Humanity in Nonprofit Marketing in the Age of AI

Peter Kelly | Founder, Ship To Shore Communications

Artificial intelligence is already embedded in marketing platforms, donor systems, and communication workflows across the nonprofit sector. The question is no longer whether to use AI. The question is how to use it without losing the humanity at the center of your mission.

In this bold and practical breakout session, Peter Kelly challenges nonprofit leaders to rethink AI as a strategic amplifier rather than a replacement for empathy. Through real-world examples, live demonstrations, and an actionable evaluation framework, participants will learn how to integrate AI into marketing and storytelling while protecting dignity, trust, and authenticity.

Key Shifts to Transform & Elevate Any Board (continued)

Eddrick Martin | CEO and Lead Strategist, Elevated Momentum Consulting, LLC

Discover essential strategies to elevate your nonprofit board's performance in this interactive workshop. Participants will learn proven frameworks for building board growth, engagement, accountability, and ownership. The session includes practical templates, sample policies, and data-backed best practices. Attendees will leave with a toolkit to strengthen board culture, improve retention, and advance the organization's mission. This session is tailored for nonprofit executives and board leaders seeking concrete steps and resources to advance their board development goals.

Count Us In: Nonprofits and the 2030 Census (continued)

Lynn Woo | Associate Director, Center for Population Studies
Kyra Roby | Principal, Chase Gen Strategy Consultants, LLC

An inaccurate census costs Mississippi communities real dollars and real representation. This training unpacks exactly how census data drives funding and resources to the state's most vulnerable populations and exposes the myths keeping people from participating. Walk away with a deeper understanding of what's at stake, the facts to counter misinformation, and a concrete plan to activate your networks and champion a full and accurate count.

Supported by



SPECIAL PRESENTATIONS

Throughout the Day



SPEAKER PROFILES



Opener

Dr. Corey Wiggins currently serves as the federal co-chairman for the Delta Regional Authority (DRA), a federal regional commission promoting and encouraging the economic development of the lower Mississippi River and Alabama Black Belt regions. He was nominated by President Joseph R. Biden to serve as the fourth federal co-chairman for the DRA on Dec. 15, 2021, and was confirmed unanimously by the U.S. Senate on March 11, 2022.

Prior to joining DRA, Wiggins served as the executive director of the Mississippi State Conference NAACP. He also served as the senior vice president of policy and evaluation at Hope Enterprise Corporation, where he also held the position of executive director of the Mississippi Economic Policy Center and executive director of the Hope Policy Institute. Throughout his career, Wiggins has focused on strengthening communities, building assets, and improving lives in economically distressed areas of the Mid-South.

A native of Hazlehurst, Mississippi, Wiggins is a graduate of Alcorn State University, where he earned a Bachelor of Science in biology, and the University of Alabama at Birmingham, where he earned a Master of Science in public health and a Doctor of Philosophy in health promotion. He also holds a certificate of nonprofit leadership from Boston College and has completed fellowships with the Kaiser Family Foundation, the W.K. Kellogg Foundation and the Massachusetts Institute of Technology.



Keynote

Tyeshia "Ty" Wilson is a Certified Impact Philanthropy Advisor, an award-winning philanthropist, a giving circle expert, and a catalyst for collective action, driven by the belief that everyone is a philanthropist capable of creating positive social change.

As Senior Director of Community at Philanthropy Together, Ty leverages her lived experiences and professional expertise in community organizing and coalition building to architect partnership, programmatic and engagement strategies that connect diverse stakeholders globally. From grassroots organizers to foundation leaders, all are united in their commitment to growing the collective giving movement.

An energizing public speaker and staunch advocate for diversifying and democratizing philanthropy, Ty has spoken to thousands of people and trained hundreds through Philanthropy Together's flagship Launchpad programs. She serves as immediate past Chair of HERitage Giving Fund, the first Black giving circle in Texas, and a board member for RegisterHER, Philanos and the Women of Color in Fundraising and Philanthropy.

Ty's strategic, community leadership experience spans government, corporate, and nonprofit sectors. Notably, she previously served as Assistant to the City Manager and Chief of Staff at the City of Dallas, where she was instrumental in establishing the city's first community engagement division within the aviation department.

A proud Dallas native with deep Texas roots, Ty holds degrees from UT Arlington and UNT Dallas. Her unwavering commitment to advancing equitable, trust-based grantmaking practices was recognized with an honor on the 2022 Black Women Give Back List.

Breakout Session Facilitators



Facilitator

Jessica Abram, MPA, is the Founder of Bloom Education Group and a former Mississippi Delta teacher. After leading students to surpass state performance averages, she saw the need for better metrics and earned an MPA in Program Evaluation from George Washington University. Jessica brings a practitioner's mindset to research, ensuring evaluation aligns with the daily realities of service delivery. She has led evaluations for multi-institutional initiatives across Mississippi and serves on the board of Mississippi First. She helps organizations stop guessing and start growing with purpose.



Facilitator

Tiffiney Carter-Washington is the AI Lab Manager and Technical Advisor for the Alliance, dedicated to equipping Mississippi nonprofits with greater digital literacy and facilitating the adoption of transformative technologies. Possessing over 25 years of experience in Information Technology and Computer Science – along with bachelor's degree in Computer Science and Mathematics from Jackson State University and a master's degree in Management Information Systems from the University of Arkansas – Tiffiney leverages her extensive experience to bridge the digital divide and empower organizations to thrive in today's tech-driven landscape.



Moderator

Kim Davis is the President of the Carl B. And Florence E. King Foundation. He is a philanthropic and education leader with over a decade of experience advancing high-quality education across Arkansas. He is nationally recognized for championing innovative charter schools that meet students where they are and unlock new possibilities for learning. During his time at the Walton Family Foundation, led the expansion of Haas Hall Academy—ranked among the nation’s best by U.S. News & World Report—and helped to recruit Lisa Academy’s STEM-focused approach to Northwest Arkansas. He was instrumental in supporting Arkansas Arts Academy, a public charter school rooted in artistic integration, Hope Academy, a trauma-informed school model designed to meet the needs of children who have experienced adverse life experiences, and the founding of the School for Advanced Studies, a bold model built on civil discourse, deep inquiry, and seminar-style classes that promote curiosity and critical thinking. These efforts have resulted in thousands of new high-quality charter school seats in Arkansas and an increase charter school access for Latino families by more than 35%.

Throughout his career, Kim has worked to ensure that all families—regardless of background—have access to high-quality charter education. His efforts expanded educator training opportunities across the region and strengthened pathways connecting education to workforce outcomes. A past member of the Arkansas State Board of Education and the state’s Charter Authorizing Committee, Kim’s work is grounded in the belief that every child—regardless of zip code—deserves a school that meets their needs and fuels their potential.



Facilitator

Jan Eastman has over 66 years of work experience including management, consulting, accounting, IT, education, and marketing. She has a B.S. and M.S. in Accounting and Education from MUW. After 21 years with IBM, she established an organizational development practice, working with 86 nonprofits over the past 31 years. Beginning in 2005, Jan served for six years as Director of Development for the CREATE Foundation and is the Executive Director of Lowndes Community Foundation. In addition, she has been an Adjunct Professor at Tulane University and University of New Orleans, teaching an NPO graduate course.



Facilitator

Peter Kelly is the Founder of Ship To Shore Communications, a strategic communications firm serving mission-driven organizations across nonprofit, government, and complex industries. With more than 16 years of experience in marketing, PR, film production, and campaign leadership, he helps mission-driven organizations translate complexity into clarity through data-driven strategy and storytelling. Peter specializes in aligning mission and message while ensuring technology enhances, rather than replaces, human connection. His work centers on the belief that in an increasingly automated world, clarity, empathy, integrity, and humanity are a nonprofit's greatest competitive advantages.



Facilitator

Eddrick Martin is CEO and Lead Strategist for Elevated Momentum Consulting LLC. He has vast experience working with non-profit organizations in which he has provided leadership in various capacities. He is a twenty-five-year veteran of working and collaborating with nonprofits. His areas of expertise range from board development, strategic planning, leadership skills, organizational effectiveness, volunteer and stakeholder development, and more. Eddrick holds a Master's in Nonprofit Administration and a bachelor's degree in public policy/political science. He has also served in roles such as Executive Director, COO for a large nonprofit, and Board President of multiple organizations.



Facilitator

Kyra Roby, Esq. is a Mississippi-based policy strategist, attorney, and founder of Chase Gen Strategy Consultants, a firm supporting nonprofits, coalitions, and public agencies in advancing equitable policy solutions. She leads strategic planning, policy development, coalition coordination, and communications efforts to align advocacy with community priorities and drive systems change. Previously, she served as Policy Director at One Voice, where she led state policy strategy and multi-issue campaigns across tax, education, healthcare, voting rights, and economic justice. Her experience also includes civil rights litigation and federal government service. Kyra is a proud Mississippi native, devoted mother to her son, Jaxson, and grounded in her faith.



Facilitator

Melvin L. Smith, MPH, is a Ph.D. student in Instructional Systems and Workforce Development at Mississippi State University. His research and current projects emphasize the design of mentorship as a vehicle for leadership development and cross-sector talent mobility. He studies how organizations move beyond informal support models and embed mentorship as strategic infrastructure to strengthen capacity and mission continuity. He is also the founder of Linked Innovations, LLC. This workforce firm strives to be the “Architect of Opportunity,” and the host of the Lift Every Voice podcast, which spotlights the people and programs reshaping the path to opportunity.



Facilitator

George E. Stewart II is an Education Program Officer at the Foundation for the Mid South. He manages program investments and aligns philanthropic funding with community-defined priorities. George also designs long-term, equity-centered education strategies, cultivates cross-sector partnerships, and advances data-informed grantmaking. With a background in teaching and advocacy, George brings systems-level thinking and community-rooted leadership to strengthen educational outcomes across the Mid-South.



Facilitator

Lynn Woo is the Associate Director for the Center for Population Studies at the University of Mississippi. She also serves as the director for the Society and Health academic minor housed within CPS and the College of Liberal Arts. Also housed within CPS is the State Data Center which is the lead for the partnership between the US Census Bureau, the University of Mississippi, and the State of Mississippi. Growing up in the Mississippi Delta, she has an appreciation for rural spaces and the people and community organizations within them. Her research interests include community development, health, migration, and education.

VENDORS

 arthur | alley



CERE | Center for
Research Evaluation



ABOUT THE ALLIANCE

Who We Are

The Mississippi Alliance of Nonprofits and Philanthropy is a catalyst for connection, innovation, and impact. As a statewide network, the Alliance is dedicated to partnering with mission-driven nonprofit organizations and philanthropy to strengthen the sector and champion progress. Through shared learning, strategic collaboration, and a deep commitment to equity and community, we work to ensure Mississippi's people and places have the resources to thrive.

OUR WORK

Through training, consulting, collaboration, and resource sharing, we help nonprofit and philanthropic members build sustainability and expand their impact across Mississippi.

OUR PURPOSE



Mission

To serve, build capacity, and foster collaboration among and between Mississippi's nonprofit and philanthropic communities.

Vision

The Mississippi Alliance of Nonprofits and Philanthropy envision effective and efficient nonprofit and philanthropic organizations throughout the state, working together to improve the lives of the people and communities of Mississippi.

MEMBERSHIP HAS ITS ADVANTAGES

Joining the Alliance means more than an affiliation—it means becoming part of a powerful, statewide network of nonprofits and philanthropy working together to strengthen Mississippi communities. Let's build a better Mississippi—together.

Visit alliancems.org for more details or send an email to membership@alliancems.org.

How We Support You

THE 5 C'S

▶ **CAPACITY BUILDING**

Trainings, tools, certifications, learning tracks, resources and below-market-rate consulting

▶ **CONVENING**

Unique networking opportunities, quarterly and annual member meetings, webinars

▶ **COLLABORATING**

Subject-based networking groups, strategic partnerships, exclusive discounts on partner services

▶ **COMMUNICATING**

Email updates, alerts, newsletters, publications, social media engagement, member portal

▶ **CONNECTING**

Key resources, data, and reports

Survey

Help us plan for next year!
Use [this link](#) or scan the QR code to complete a brief survey about your day.



Thank You!

#UNITEDFORIMPACT2026

ACKNOWLEDGEMENTS

SPECIAL THANKS

Par'Excelon Marketing & Events Group

Jackson Convention Complex

Greg Campbell Photography

Fresh Cut Catering & Floral

Mississippi Symphony Orchestra

Visit Jackson

DOVIA

Mars & Steel Awards

We would like to thank all of our funders and supporters.

