



MISSISSIPPI
ALLIANCE
of NONPROFITS
AND PHILANTHROPY



PHILANTHROPIC GIVING IN MISSISSIPPI

2 0 1 9

A publication of the Mississippi Alliance of Nonprofits and Philanthropy

ACKNOWLEDGMENTS

The Mississippi Alliance of Nonprofits and Philanthropy (The Alliance) is pleased to present this report – 2019 Philanthropic Giving in Mississippi – so knowledge about the scope, scale, and importance of philanthropy can be shared with key stakeholders and the general public. The Alliance believes that philanthropy and nonprofit service providers are two sides of the same coin in that both are ultimately working toward the same result – to make Mississippi a better place for children, families, and communities.

This report focuses on philanthropy in the state, though the information contained in the report will be of great benefit to nonprofits as they seek to build stronger relationships with grantmakers. Future reports will go into greater depth on the scope, scale and role of nonprofit service providers in Mississippi as it is critical that both philanthropy and nonprofits work collaboratively to achieve desired outcomes.

There are many to thank and acknowledge for the roles they played in helping develop this report, beginning with the philanthropic members of The Alliance who through their membership acknowledge they are part of an important learning network in the state. Their commitment to enhancing philanthropy by learning and working together is remarkable and for that we are grateful.

There are also partners who are relevant to the funding, planning, design and production of this report that must be acknowledged and singled out for their untiring efforts over the last few months to make it a reality. Were it not for the following partner organizations and individuals this report would not have been possible:

PARTNERS

RESEARCHERS, DESIGNERS, AND PROJECT MANAGERS AT THE SOCIAL SCIENCE RESEARCH CENTER AT MISSISSIPPI STATE UNIVERSITY

Arthur Cosby, Director

Benjamin Walker, Project Director

John McCown, Research Associate

Ismail Yigit, Graduate Research Assistant

Lauren Ingram, Graphic Designer

DATA SOURCES AND PROJECT CONSULTANTS FROM CANDID

David Wolcheck, Manager, Data Standards

Reina Mukai, Manager, Global Projects & Partnerships

REPORT REVIEWERS

Mike Clayborne, CREATE Foundation

Aisha Nyandora, Springboard to Opportunity

Lloyd Gray, The Phil Hardin Foundation

Charles Lindsay, Matthews, Cutrer & Lindsay, CPA

Jane Alexander, The Community Foundation for Mississippi

Michael Cormack, Jackson Public Schools

Mike Ward, Consultant

REPORT FUNDING

W. K. Kellogg Foundation

Sammy Moon

Executive Director

The Mississippi Alliance of Nonprofits and Philanthropy

DEDICATION

During the time this report was being developed a remarkable event occurred in Mississippi's philanthropic and nonprofit communities. Two existing organizations, The Mississippi Association of Grantmakers (MAG) and The Mississippi Center for Nonprofits (MCN), went out of business. In their place a new entity was created, The Mississippi Alliance of Nonprofits and Philanthropy (The Alliance).

This is a remarkable accomplishment, not only in Mississippi, but in the entire country. The proactive, intentional, and strategic creation of such a statewide organization designed to serve both nonprofits and philanthropy is unique, and we believe it is on the cutting-edge of the direction others across the country will be taking in the future. The decision by both MAG and MCN to move in this direction was based on the simple idea that philanthropy and nonprofit service providers are fundamentally in the same business of using their time, talent, and treasure to create better outcomes for children, families, and communities across the state.

If this idea is correct, then both philanthropy and nonprofits are simply two sides of the same coin, with the edge of the coin representing the point where the two come together to make a difference. The challenge becomes one of providing the array of services, supports, and opportunities needed to move from being two sides of the coin to the edge! That's the opportunity presented to The Alliance.

The theory of change that moves the two sides of the same coin from idea to action is based on creating new ways of doing business between philanthropy and nonprofits so there is collaborative learning, sharing, creating, networking, communicating, measuring, and celebrating success. This new way of doing business collaboratively becomes the norm rather than the exception with The Alliance, and we believe it has transformative potential.

The change needed in order to give up the long-standing organizational boundaries of existing entities and take the risks involved in creating The Alliance was (and is) quite extensive and risky. The boards of both previous organizations were able to work together for almost three years to thoroughly explore the opportunities and challenges presented by the two sides of the same coin idea, ultimately deciding the risk was worth it. By putting turf, ego, and existing organizational cultures aside in April 2019, they formally created The Alliance and closed the door on the existing entities.

Because of the incredible dedication and work done by both boards representing MCN and MAG, this report is dedicated to them. Were it not for their courage, leadership, commitment, and persistence there would be no Alliance. We salute every board member that served during the planning period, but special thanks go to the executive leadership of both boards: Liz Brister, Carol Penick, Wendy Mullins, Tom Pittman, Aisha Nyandora, and Mike Clayborne.



CONTENTS

{ EXECUTIVE SUMMARY	6
{ FOUNDATION GIVING	7
{ GRANT MAKING BY SUBJECT AREA	10
{ GRANTS BY GEOGRAPHY	18
{ GRANTMAKING PUBLIC CHARITIES	20
{ ENDOW MISSISSIPPI	24
{ METHODOLOGY	25
{ APPENDICES	26
{ FUNDERS	31

FOREWORD

In 2015 the first report detailing the scope and scale of philanthropy in Mississippi was published. It was a very important publication because it provided the state's first data-driven analysis documenting philanthropic assets, types of philanthropic organizations, grants and investments, priority issues funded by philanthropy, and geographic distribution of assets and grants. The report proved valuable not only to philanthropy, but also to public sector officials, nonprofit service providers, and others interested in studying the impact of philanthropic giving.

We are pleased to present the second of a series of data-driven studies of philanthropy and nonprofits in the state – The 2019 Philanthropic Giving in Mississippi report. Although this new document generally follows the same format as the 2015 report, there is quite a bit of new information included. We encourage you to use this report in a way that addresses your interests. For example, if you are interested in simply learning more about philanthropy and grant-making in the state, you will find the report helpful because it provides the most up-to-date information available about philanthropy in Mississippi. If you are a grant-seeker and your interest is in increasing your knowledge about which philanthropic organizations are funding issues for which you are seeking funds, you will find that information also included in the report.

You are encouraged to take the time to read the report carefully, absorbing the full impact of the importance and relevance of philanthropy in the state. Then, depending on your specific interests and needs, review the sections of the report that are most relevant to you, using the information to address your own priorities.

We want to express our sincere thanks to the W.K. Kellogg Foundation (WKKF) for providing the resources to make this report possible. The WKKF professionals in Mississippi and Battle Creek have been remarkable partners in supporting the documentation of the philanthropic landscape in Mississippi. Their commitment to building philanthropic and nonprofit capacity is critically important to achieving positive impact for children, families and communities in the state.

All the best,

Sammy Moon
Executive Director
The Mississippi Alliance of Nonprofits and Philanthropy

EXECUTIVE SUMMARY

KEY FINDINGS

- \$95 million in giving from 299 Mississippi grantmaking foundations
- \$58 million in giving by non-Mississippi foundations to Mississippi recipients
- The majority of grants (68%) and grant dollars (81%) from Mississippi foundations stayed in Mississippi
- \$1.5 billion in assets for Mississippi foundations
- The largest share of Mississippi foundation grant dollars went to education (44%), followed by health (16%), human services (14%), and community and economic development (6%)
- Mississippi public charities had a total of \$3 billion in assets and gave \$218 million in grants
- United Ways of Mississippi gave over \$9 million in grants

FOUNDATION GIVING IN MISSISSIPPI

- In 2016, Independent and family foundations accounted for 64% of the \$95 million in grant dollars given by Mississippi foundations. Community foundations accounted for the second largest share of grant dollars (18%) followed by corporate foundations (13%), and operating foundations (5%).
- Since 2001, total foundation giving has increased from \$55 million to \$95 million in 2016.
- The CREATE Foundation gave more in grant dollars (\$8.7 million) than any other Mississippi foundation in 2016, followed by the Mississippi Common Fund Trust (\$6.6 million), and The Luckyday Foundation (\$4.4 million).

GRANTMAKING BY SUBJECT AREA

- Education and health were the top funding priorities in 2016. A total of \$26.4 million in grant dollars were devoted to education followed by health (\$9.7 million), human services (\$8.5 million), and community and economic development (\$3.6 million).

GRANTMAKING BY TYPE OF SUPPORT

- In 2016, the most commonly specified type of support was program support—30% of grants—followed by general support (21%), and individual development (11%).

GRANTMAKING BY GEOGRAPHIC AREA

- Grantmakers in Hinds County awarded \$32.1 million in grant dollars in 2016, more than any other county in Mississippi, followed by Lee (\$12.9 million), Madison (\$10.8 million), Lafayette (\$8.5 million), and Lauderdale (\$5.7 million).
- In 2016, recipients in Hinds County were awarded the most grant dollars (\$46.1 million), followed by Lafayette (\$10.8 million), Harrison (\$5.8 million), Oktibbeha (\$5.8 million), and Forrest (\$5.4 million).

GRANTMAKING BY PUBLIC CHARITIES

- Mississippi public charities gave \$218 million in grants and held \$3 billion in assets in 2016, accounting for 69% of all grant dollars given by Mississippi grantmakers and 66% of assets held by Mississippi grantmakers.

FOUNDATION GIVING

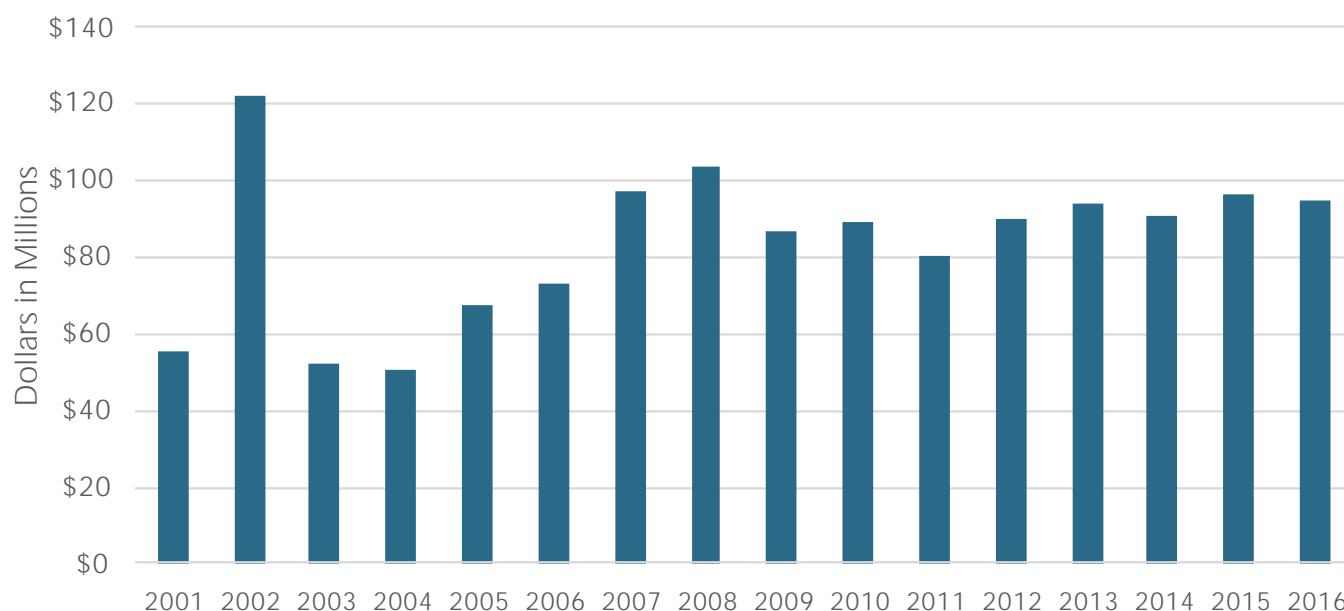
In 2016, Mississippi Foundations gave a total \$95,047,990 in grants (Table 1). This figure includes grants made by 299 active Mississippi-based foundations. Foundations are classified in four categories: Independent and family, corporate, community, and operating. Independent and family, corporate, and community foundations are categorized based on their source of funding. An operating foundation is defined by the IRS as, “a private foundation whose primary purpose is to conduct research, social welfare, or other programs determined by its governing body or establishment charter.” In 2016, independent and family foundations accounted for a majority (85%) of the \$95 million in grant dollars given by Mississippi foundations. Grantmaking from public charities is described elsewhere in this report (see pp. 20-23).

TABLE 1: SUMMARY STATISTICS FOR MISSISSIPPI GRANTMAKING FOUNDATIONS BY TYPE, 2016

TYPE	NUMBER	%	ASSETS	%	TOTAL GIVING	%
Independent Foundation	255	85.3%	\$1,021,603,627	66.2%	\$160,867,861	64.0%
Community Foundation	9	3.0%	\$215,509,947	14.0%	\$16,619,053	17.5%
Corporate Foundation	13	4.3%	\$193,501,610	12.5%	\$12,461,616	13.1%
Operating Foundation	22	7.4%	\$112,564,502	7.3%	\$5,099,460	5.4%
Total	299	100.0%	\$1,543,179,686	100.0%	\$95,047,990	100.0%

Since 2001, foundation giving in Mississippi has fluctuated, especially during the period of the great recession. However, giving has been generally trending upward (Figure 1). In 2016, Mississippi foundations gave \$95 million in grants, compared to \$73 million in 2006, a 23% increase. The record amount of giving occurred in 2002 when Mississippi grants totaled \$122 million. Much of this increase in giving can be attributed to a \$65 million grant to the University of Mississippi from the Mississippi Common Fund Trust which is an independent foundation.

FIGURE 1: TOTAL GIVING BY MISSISSIPPI FOUNDATIONS, 2001-2016



Source: Candid, 2019. Figure based on unadjusted dollars

TOP 10 MISSISSIPPI FOUNDATIONS IN GIVING AND ASSETS

Tables 2 and 3 show the ten Mississippi Foundations who gave the most in grants in 2012 and 2016. The ten foundations with the highest giving accounted for 45% of grant dollars given by Mississippi foundations, and the ten foundations with the highest assets accounted for 48% of Mississippi foundation assets, respectively. In 2016, the CREATE Foundation and the Mississippi Common Fund Trust gave the most in total grant dollars (\$8.7 million and \$6.6 million, respectively). Notably, the CREATE Foundation moved up three spots to number one from number four in 2012. There is a significant overlap between those ranked in the top 10 in giving and those ranked in the top 10 in assets; 7 of those in the top 10 in giving were also in the top 10 in assets (see Appendix B). The CREATE Foundation is also ranked in the top 10 in terms of total assets (2rd; \$101.8 million), following The Luckyday Foundation (\$115.8 million).

TABLE 2: TOP 10 MISSISSIPPI FOUNDATIONS BY TOTAL GIVING, 2012

FOUNDATION NAME	CITY	COUNTY	TYPE	TOTAL GIVING
Mississippi Common Fund Trust	University	Lafayette	IN	\$10,742,251
Gulf Coast Community Foundation	Gulfport	Harrison	CM	\$5,743,673
The Luckyday Foundation	Ridgeland	Madison	IN	\$5,159,118
Create Foundation	Tupelo	Lee	CM	\$4,462,511
Oakwood Foundation Charitable Trust	Tupelo	Lee	CS	\$3,928,000
The Bower Foundation, Inc.	Ridgeland	Madison	IN	\$3,611,373
Blue Cross & Blue Shield of Mississippi Foundation	Flowood	Rankin	CS	\$2,988,682
The Gertrude C. Ford Foundation, Inc.	Jackson	Hinds	IN	\$2,562,500
The Riley Foundation	Meridian	Lauderdale	IN	\$2,472,595
Gilmore Sanitarium, Inc.	Amory	Monroe	IN	\$2,278,774
Total Top 10 Giving				\$43,949,477

TABLE 3: TOP 10 MISSISSIPPI FOUNDATIONS BY TOTAL GIVING, 2016

FOUNDATION NAME	CITY	COUNTY	TYPE	TOTAL GIVING
Create Foundation	Tupelo	Lee	CM	\$8,724,346
Mississippi Common Fund Trust	Oxford	Lafayette	IN	\$6,565,000
The Luckyday Foundation	Jackson	Hinds	IN	\$4,429,006
The Bower Foundation, Inc.	Ridgeland	Madison	IN	\$4,291,086
Blue Cross & Blue Shield of Mississippi Foundation	Flowood	Hinds	CS	\$4,178,474
Oakwood Foundation Charitable Trust	Tupelo	Lee	CS	\$3,430,000
The Gertrude C. Ford Foundation, Inc.	Ridgeland	Madison	IN	\$3,210,893
The Riley Foundation	Meridian	Lauderdale	IN	\$2,896,800
Ergon Foundation, Inc.	Jackson	Hinds	CS	\$2,748,000
Wheaton Foundation	Jackson	Hinds	OP	\$2,707,669
Total Top 10 Giving				\$43,181,274

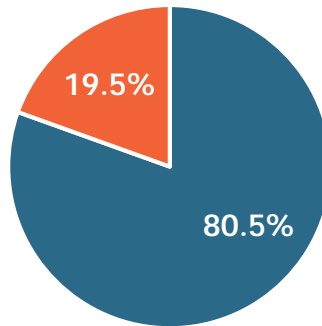
Note: IN = Independent foundations; CM = Community foundation; CS = Corporate foundation; OP = Operating foundation

WHERE MISSISSIPPI GRANT DOLLARS WENT

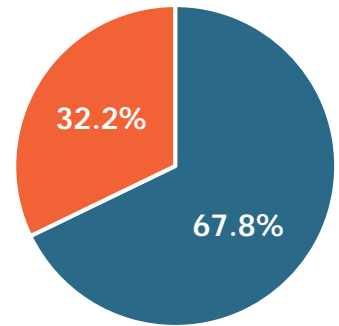
As shown in Figure 2, the majority of grants and grant dollars awarded by Mississippi foundations went to Mississippi recipients (68% and 81%, respectively). The largest amount of grant dollars to out of state recipients were directed to recipients in Washington DC (\$3.3 million) and Virginia (\$2.3 million). These grants represented 48% of total grant dollars to non-Mississippi recipients.

FIGURE 2: GRANTS AWARDED BY MISSISSIPPI FOUNDATIONS, 2016

PERCENT OF GRANT DOLLARS



PERCENT OF GRANTS



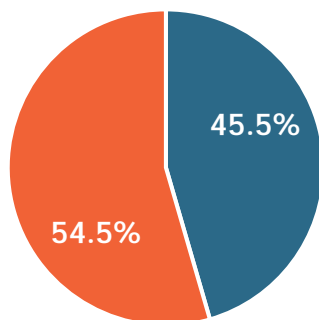
Other U.S. based Recipients Mississippi Recipients

WHERE MISSISSIPPI GRANT DOLLARS CAME FROM

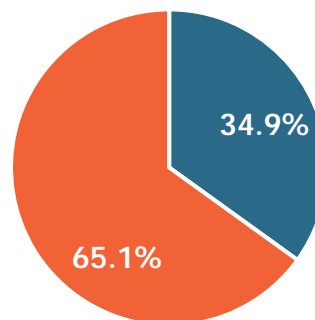
Figure 3 shows the proportion of grants and grant dollars paid to Mississippi recipients by Mississippi foundations versus out of state foundations. Based on this sample, out of state foundations gave approximately \$58 million in grants to recipients in Mississippi, accounting for 55% of grant dollars received in the state. In 2016, the W. K. Kellogg Foundation gave more grant dollars to Mississippi recipients (\$15.7 million) than any non-Mississippi foundation, accounting for approximately 27% of all out of state dollars directed to Mississippi. The W. K. Kellogg Foundation has nearly doubled their grant making investment in Mississippi since 2012 (\$8.6 million). As shown in Table 4, other out of state-foundations in the Top 5 in giving to Mississippi include: Silicon Valley Community Foundation (\$4.2 million), John D. and Catherine T. MacArthur Foundation (\$3.5 million), The Kresge Foundation (\$3.1 million), and the NoVo Foundation (\$1.9 million).

FIGURE 3: GRANTS AWARDED TO MISSISSIPPI RECIPIENTS, 2016

PERCENT OF GRANT DOLLARS



PERCENT OF GRANTS



Other U.S. based Foundations Mississippi Foundations

TABLE 4: TOP 5 OUT OF STATE FOUNDATIONS IN MISSISSIPPI GIVING, 2016

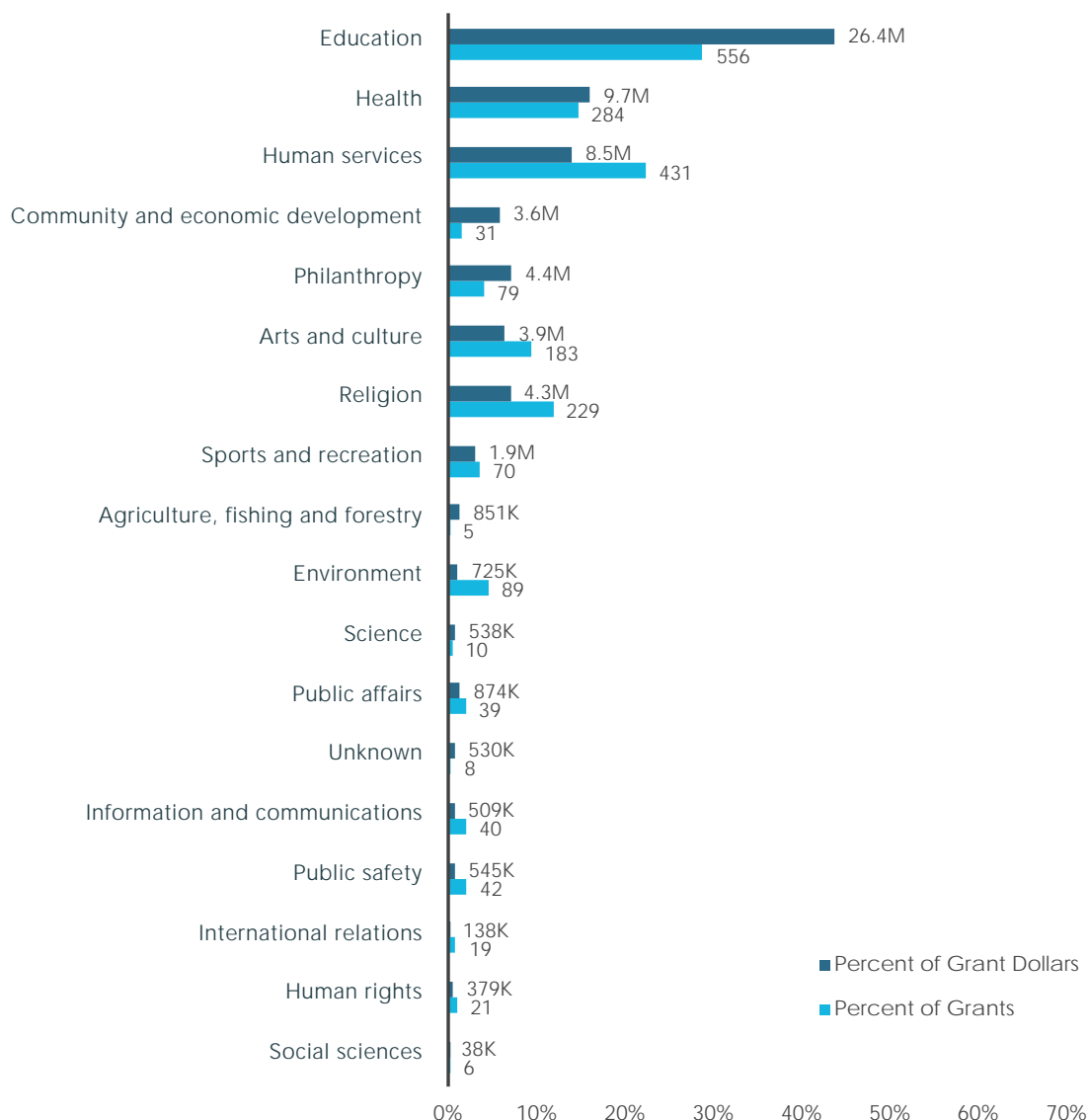
FOUNDATION	STATE	TYPE	GRANTS	%	MS GIVING	%
WK Kellogg Foundation	MI	IN	32	1.3%	\$15,687,365	27.0%
Silicon Valley Community Foundation	CA	CM	8	0.3%	\$4,165,860	7.2%
John D. and Catherine T. MacArthur Foundation	IL	IN	1	0.0%	\$3,500,000	6.0%
The Kresge Foundation	MI	IN	3	0.1%	\$3,075,000	5.3%
NoVo Foundation	NY	IN	3	0.1%	\$1,950,000	3.4%

GRANTMAKING BY SUBJECT AREA

FUNDING PRIORITIES IN MISSISSIPPI

Figure 4 shows the percentage of grants and grant dollars from Mississippi foundations by subject area. Each grant in this analysis was coded based on Candid's Philanthropy Classification System (PCS). Several grants (14%) were coded in multiple subject areas and were therefore counted multiple times. This analysis is based on a sample of 1,921 indexed grants from 299 Mississippi foundations. Of the subject areas listed in Figure 4, Mississippi foundations awarded the most grant dollars toward the benefit of education. A total of 556 grants worth \$26.4 million dollars representing 44% of all grant dollars was provided by Mississippi foundations in 2016. Table 5 on page 11 shows the top 5 foundations in terms of total grant dollars to health, education, public affairs, and arts and culture. A detailed analysis of the top five funding areas is shown on Table 6 (p. 12). For education, most grant dollars were for higher education (30%). In the area of health, general purpose health grants accounted for the largest percentage of all grant dollars (6%).

FIGURE 4: MISSISSIPPI GRANTMAKING BY SUBJECT AREA, 2016



Note: Analysis based on a sample of 1,921 indexed grants. Approximately 14% of grants were coded in multiple subject areas and were therefore counted multiple times. Analysis does not capture all grants made by Mississippi Foundations.

TABLE 5: TOP 5 FUNDERS BY SUBJECT AREA

EDUCATION	AMOUNT	NO. GRANTS
The Luckyday Foundation	\$4,386,506	3
Mississippi Common Fund Trust	\$4,040,000	2
The Robert M. Hearin Foundation	\$2,052,133	11
The Phil Hardin Foundation	\$1,973,143	52
The Bower Foundation, Inc.	\$1,878,862	8
HEALTH	AMOUNT	NO. GRANTS
Blue Cross & Blue Shield of Mississippi Foundation	\$3,145,537	18
The Bower Foundation, Inc.	\$2,155,513	8
The Gertrude C. Ford Foundation, Inc.	\$806,533	15
Ergon Foundation, Inc.	\$715,000	6
Biloxi Regional Medical Center Inc	\$406,350	6
HUMAN SERVICES	AMOUNT	NO. GRANTS
The Community Foundation, Inc.	\$1,500,000	2
Ergon Foundation, Inc.	\$1,298,000	17
Edwin E. and Ruby C. Morgan Foundation Inc.	\$528,100	18
Old Ladies Home Association	\$510,553	1
Asbury Foundation of Hattiesburg, Inc.	\$500,500	4
COMMUNITY AND ECONOMIC DEVELOPMENT	AMOUNT	NO. GRANTS
The Riley Foundation	\$2,996,000	11
Gulf Coast Community Foundation	\$247,250	1
Foundation for the Mid South, Inc.	\$163,000	4
Community Foundation of Northwest Mississippi	\$82,156	2
Jimmy & Hazel Sanders Charitable Trust	\$75,000	1

TABLE 6: FOUNDATION GIVING IN MISSISSIPPI BY SUBJECT, 2016

EDUCATION	AMOUNT	% OF TOTAL GRANT DOLLARS	NO. GRANTS	% OF TOTAL GRANTS
Higher education	\$17,841,856	29.6%	246	12.8%
Graduate and professional education	\$2,664,190	4.4%	46	2.4%
Elementary and secondary education	\$1,807,353	3.0%	48	2.5%
Other categories	\$1,030,600	1.7%	27	1.4%
Education services	\$445,636	0.7%	25	1.3%
Education (general)	\$395,019	0.7%	48	2.5%
HEALTH	AMOUNT	% OF TOTAL GRANT DOLLARS	NO. GRANTS	% OF TOTAL GRANTS
Health (general)	\$3,637,077	6.0%	52	2.7%
Public health	\$3,365,060	5.6%	25	1.3%
In-patient medical care	\$2,466,454	4.1%	54	2.8%
Other categories	\$1,326,528	2.2%	73	3.8%
Diseases and conditions	\$962,766	1.6%	97	5.0%
HUMAN SERVICES	AMOUNT	% OF TOTAL GRANT DOLLARS	NO. GRANTS	% OF TOTAL GRANTS
Other categories	\$3,218,021	5.3%	171	8.9%
Human services (general)	\$2,136,994	3.5%	128	6.7%
Family services	\$2,095,488	3.5%	71	3.7%
Basic and Emergency Aid	\$1,069,445	1.8%	63	3.3%
COMMUNITIES AND ECONOMIC DEVELOPMENT	AMOUNT	% OF TOTAL GRANT DOLLARS	NO. GRANTS	% OF TOTAL GRANTS
Economic development	\$3,827,801	6.4%	37	1.9%
Community and economic development (general)	\$2,136,994	3.5%	128	6.7%
Housing development	\$1,569,680	2.6%	17	0.9%
Other categories	\$122,220	0.2%	10	0.5%

Note: Based on total grants and grant dollars in the grants-level analysis.

HOW MISSISSIPPI FOUNDATIONS SUPPORTED NON-PROFITS IN 2016

On a 990 Income Tax Exemption Form, foundations are required to list a description of each grant. Using these descriptions, grants were classified by the strategy or implementation approach being supported by the grant. This classification describes how the goals of a program or grant are being implemented or supported. The largest share of grant dollars went to program support (30%) followed by general support (21%). Program support is categorized as grants to support specific projects or programs of a grantee. General Support is categorized as grants for the day-to-day operating costs of an existing program or organization or to further the general purpose or work of an organization.

TABLE 7: FOUNDATION GIVING IN MISSISSIPPI BY SUPPORT TYPE, 2016

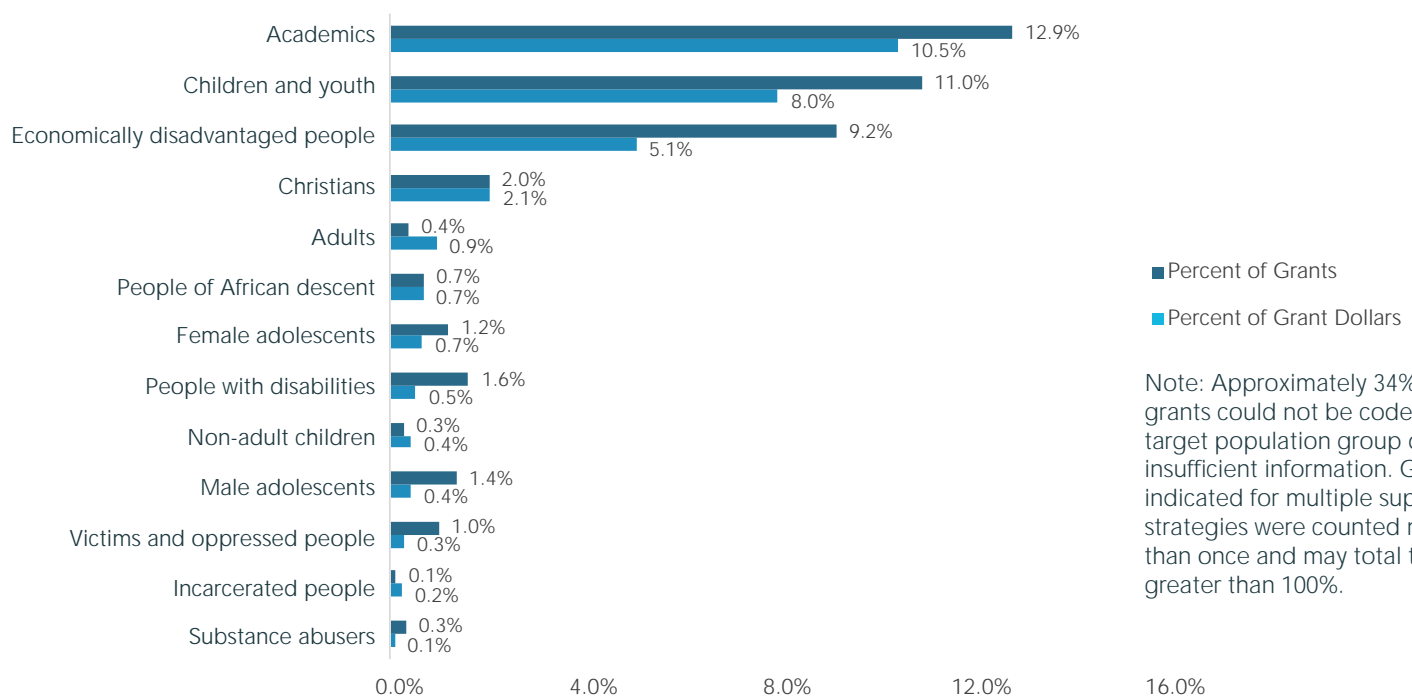
	NO. GRANTS	% OF GRANT DOLLARS	AMOUNTS
Program support	515	30.2%	\$18,193,449
General support	566	20.6%	\$12,387,233
Individual development	82	10.8%	\$6,515,485
Capital and infrastructure	25	7.2%	\$4,352,353
Research and evaluation	8	1.3%	\$788,109
Leadership and professional development	4	1.1%	\$654,833
Financial sustainability	37	0.5%	\$296,485
Presentations and productions	7	0.2%	\$118,500
Continuing support	10	0.2%	\$104,800
Network-building and collaboration	4	0.1%	\$61,193
Policy, advocacy and systems reform	4	0.0%	\$24,600
Capacity-building and technical assistance	3	0.0%	\$15,500
Outreach	2	0.0%	\$15,000
Not Specified	677	34.9%	\$21,035,797

Note: Approximately 35% of grants could not be coded for type of support due to insufficient information. Grants indicated for multiple support strategies were counted more than once and may total to greater than 100%.

WHO MISSISSIPPI FOUNDATIONS GAVE TO IN 2016

Figure 5 shows share of grants and grant dollars given to specific population groups. Candid defines a population group as a classification that, “describes who is being supported – details characteristics (age, sex, race/ethnic heritage, etc.) of the population(s) being targeted as the intended beneficiary of support and services being provided.” Note, Candid only assigns a population group to a grant when one is explicitly cited. In 2016, the largest share of grant dollars (11%) were intended for academics followed by children and youth (8%), and those economically disadvantaged (5%).

FIGURE 5: FOUNDATION GIVING BY POPULATION GROUP, 2016

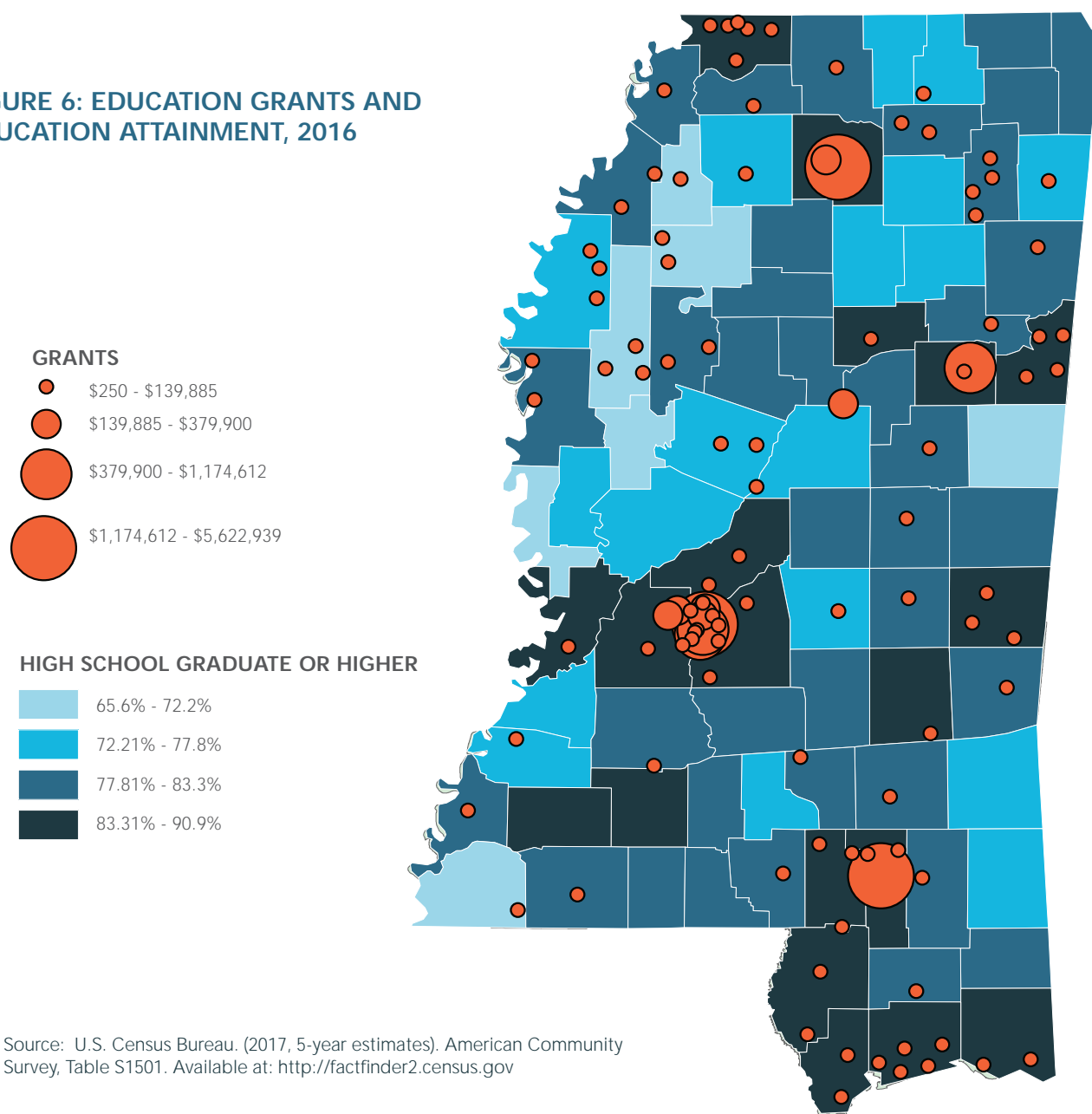


Note: Approximately 34% of grants could not be coded for target population group due to insufficient information. Grants indicated for multiple support strategies were counted more than once and may total to greater than 100%.

GRANTMAKING AND EDUCATION

Figure 6 shows the distribution of grant dollars benefitting education plotted in each ZIP code and the education attainment in each county. Education attainment is measured by the percentage of the adult population (ages 25 and older) who have a high school diploma or higher. Education giving includes grants to preschools, elementary and high schools, community colleges, four-year colleges, public libraries, and scholarships and financial aid. This map clearly shows that many areas with high need are not received a large amount of grant dollars. Rather, counties with greater education attainment on average received more education grant dollars. Counties in the top 10 for education attainment received 44% of all education grant dollars compared to just 1% for the bottom 10. This could be in part due to the location of universities and other higher education facilities. However, there are examples of significant education grantmaking to recipients in high need areas. For instance, \$100,000 in education related grants were directed from the Barnett Foundation to the Indianola Educational Foundation in Sunflower county.

FIGURE 6: EDUCATION GRANTS AND EDUCATION ATTAINMENT, 2016

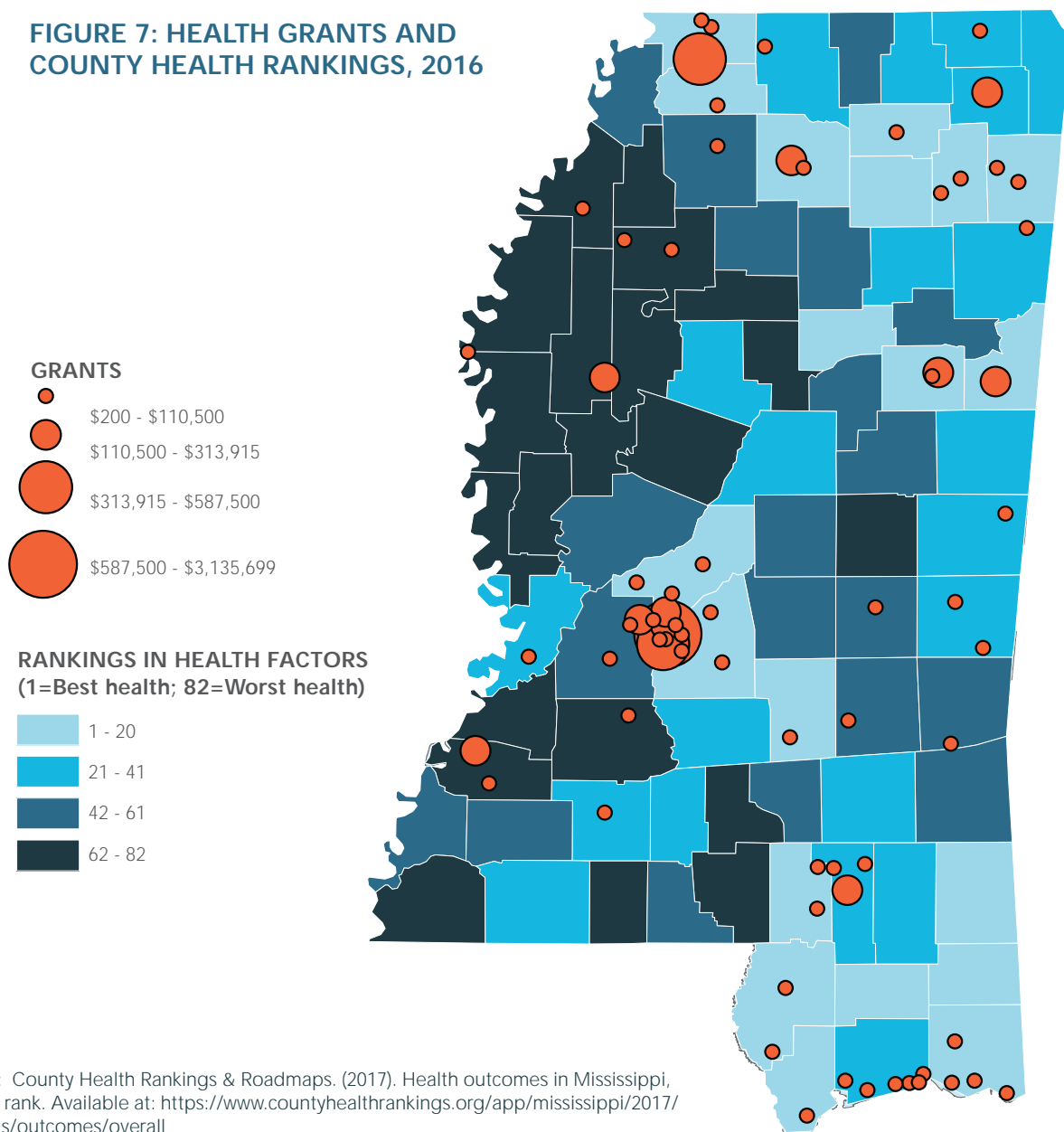


Source: U.S. Census Bureau. (2017, 5-year estimates). American Community Survey, Table S1501. Available at: <http://factfinder2.census.gov>

GRANTMAKING AND HEALTH

Figure 7 shows the distribution of grant dollars benefitting health plotted in each ZIP code and the overall health ranking for each county. The counties are ranked by "Overall Rankings in Health Factors" using data from County Health Rankings (countyhealthrankings.org). According to their methodology, "The ranks are based on four types of measures: health behaviors, clinical care, social and economic, and physical environment factors." The healthiest counties according to this ranking are DeSoto, Rankin, Lamar, Lafayette, and Madison, while the least healthy counties are Jefferson Davis, Humphrey, Jefferson, Holmes, and Coahoma. As the map shows, most grants benefitting health were given to recipients in the Jackson Metropolitan area which includes several large research hospitals and medical centers. Counties ranked in County Health Rankings top 10 received 9% of all health grant dollars compared to 5% for the bottom 10. Although counties in the Delta are ranked at or near the bottom in health factors, they are also near the bottom in grant dollars. Counties who received significant amounts of health grants tend to have a more developed health care infrastructure and a larger number of healthcare recipient organizations.

FIGURE 7: HEALTH GRANTS AND COUNTY HEALTH RANKINGS, 2016

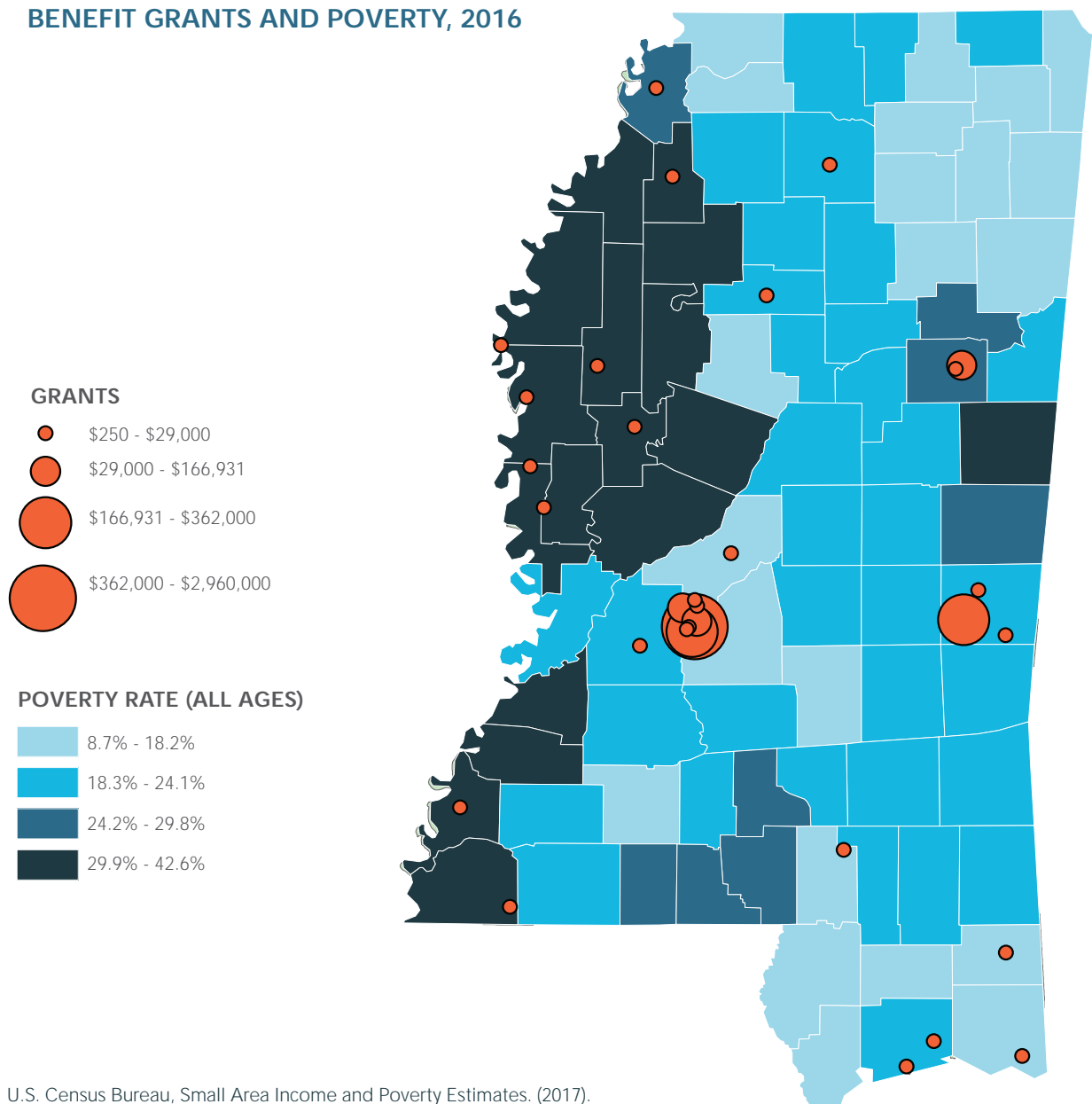


Source: County Health Rankings & Roadmaps. (2017). Health outcomes in Mississippi, Overall rank. Available at: <https://www.countyhealthrankings.org/app/mississippi/2017/rankings/outcomes/overall>

GRANTMAKING AND ECONOMIC WELLBEING

Figure 8 shows the distribution of grant dollars benefiting community and economic development plotted in each ZIP code and the 2017 poverty rate in each county. Community and economic development include grants for workforce development, community improvement and development, volunteerism, and public works. Counties with the lowest poverty rate included DeSoto (9%), Rankin (9%), Madison (11%), Lee (14%), and Itawamba (15%). Counties with the highest poverty rate included Claiborne (43%), Leflore (42%), Quitman (41%), Holmes (41%), and Humphrey (38%). Counties ranked in the top 10 (lowest) for poverty rate received 2% of all community and economic development grant dollars compared to less than 1% for counties with the 10 highest poverty rates. Giving for community and economic development was highlighted by grants from The Riley Foundation to the Meridian Community College Foundation for nearly \$3 million to promote college workforce development.

FIGURE 8: PUBLIC AFFAIRS/SOCIETY BENEFIT GRANTS AND POVERTY, 2016

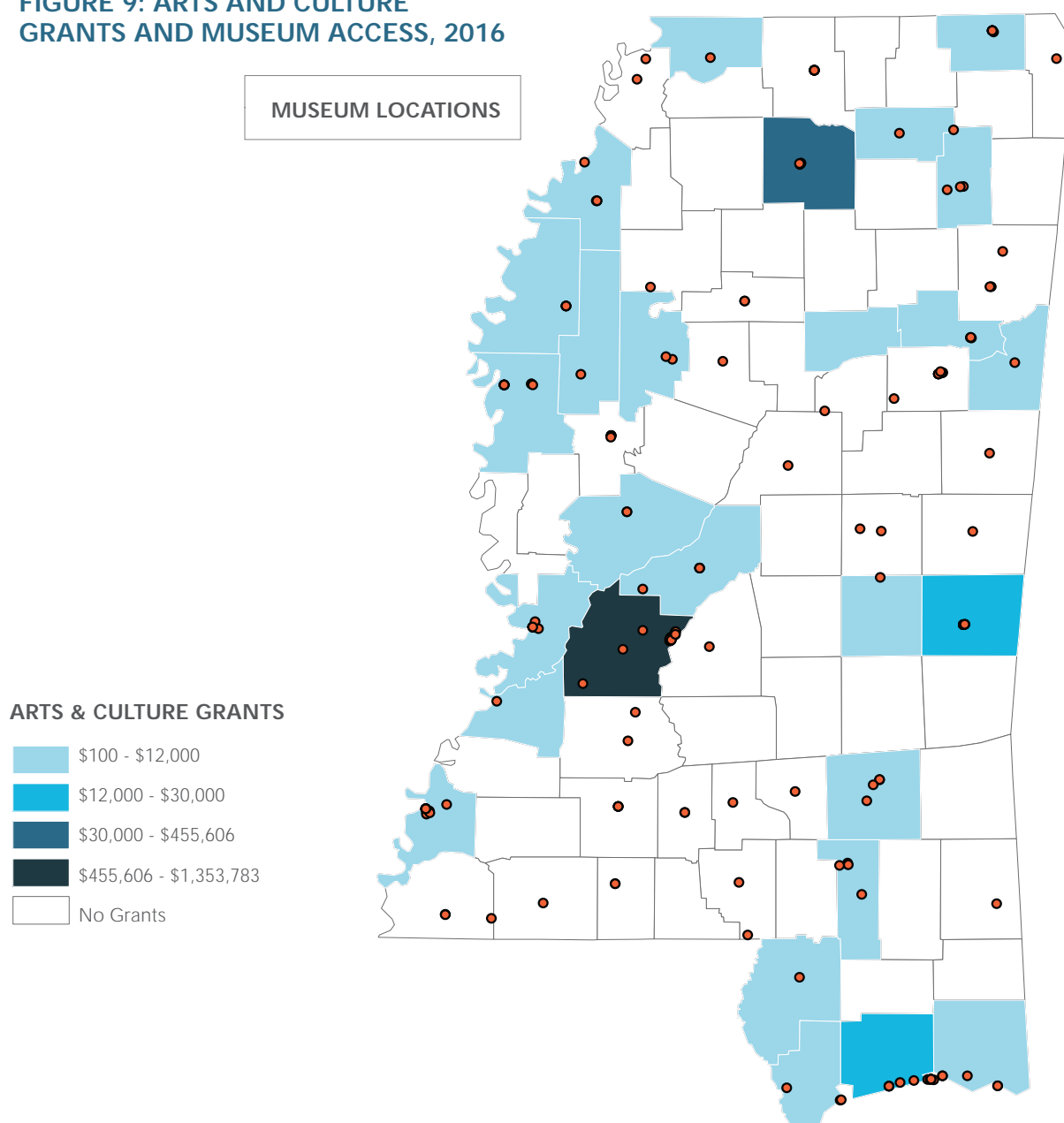


Source: U.S. Census Bureau, Small Area Income and Poverty Estimates. (2017). All ages in poverty. Available at: <https://www.census.gov/data/data-tools/saie-interactive.html>

GRANTMAKING AND ACCESS TO ARTS AND CULTURE

Figure 9 shows the distribution of arts and culture grant dollars given to each county and the locations of museums in Mississippi. There was a total of \$6 million in grant dollars given for arts and culture, but even though there are 185 museums throughout the state, these funds were only directly given to 27 counties. However, 70% of museums in the state are located within these counties that received grants for arts and culture. It is worth noting museums are not the only recipient of arts and culture grant dollars. Arts and culture grants can include grants to performing arts centers, arts education programs, and arts school, but Mississippi museums make up almost a third of all arts and culture grant dollars.

FIGURE 9: ARTS AND CULTURE GRANTS AND MUSEUM ACCESS, 2016

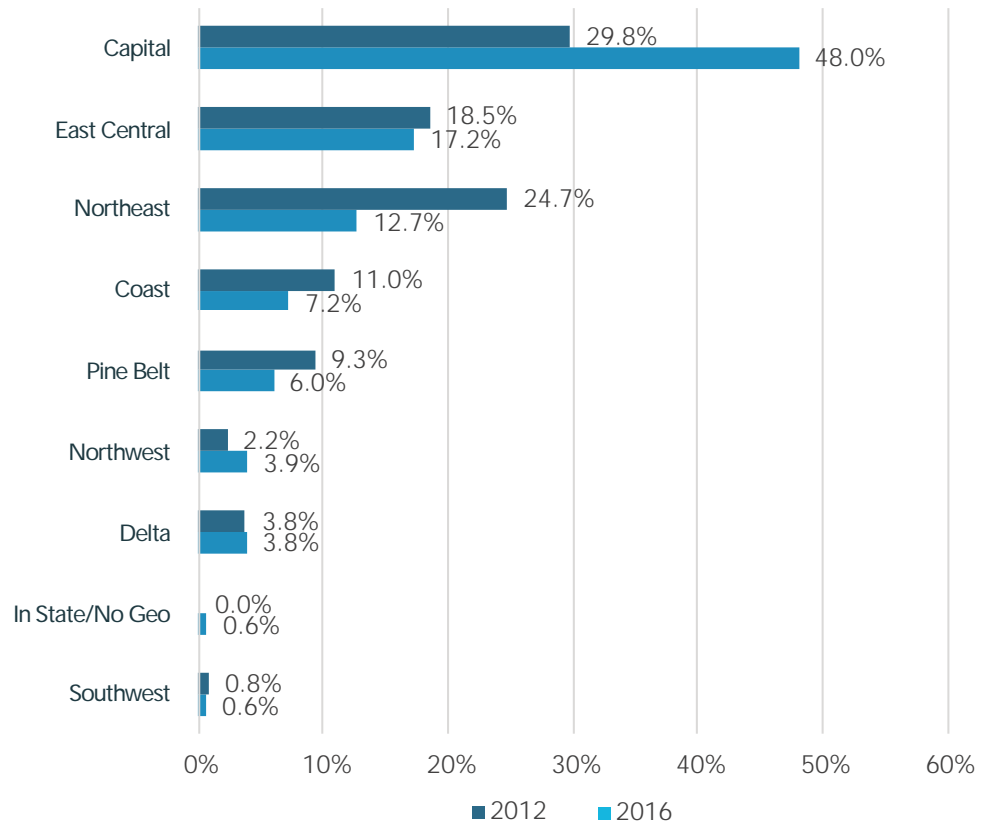


GRANTS BY GEOGRAPHY

REGIONAL DIFFERENCES IN GRANTS RECEIVED

Figure 10 shows the distribution of grant dollars received in each geographical region of Mississippi in 2012 compared to 2016. In both years, the Capital region received the most grant dollars. However, since 2012, the percentage of grant dollars given to recipients in the Capital has increased significantly from 30% in 2012 to 48% in 2016. During the same time period, the percentage of grants to recipients in Northeast Mississippi decreased from 25% to 13%. For a full list of counties in each region, see Appendix D.

FIGURE 10: GRANTS RECEIVED BY GEOGRAPHIC REGION, 2012 V. 2016



GRANTMAKING BY CONGRESSIONAL DISTRICT

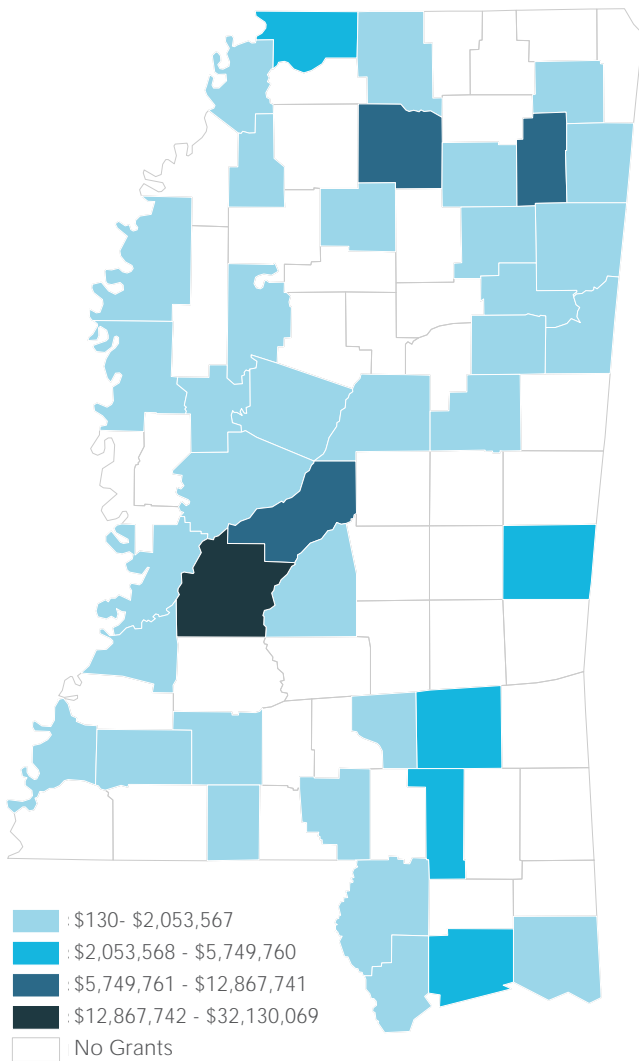
Table 8 shows the share of grant dollars that originated from foundations in each of Mississippi's four congressional districts in 2012 and 2016. In both 2012 and 2016, foundations located in Congressional District 3 gave the most in grant dollars (\$38.4 million and \$49.4 million) out of Mississippi's four congressional districts, followed by Congressional District 1 (\$28.1 million). As a whole, foundations located in District 3 also had a large increase in grants paid from 2012 to 2016. Grantmaking in all other congressional districts decreased from 2012 to 2016. Starkville, Meridian, and much of the Jackson Metropolitan Area are located in Congressional District 3. Desoto County, Oxford, and Tupelo are located in District 1.

TABLE 8: FOUNDATION GRANTMAKING BY CONGRESSIONAL DISTRICT

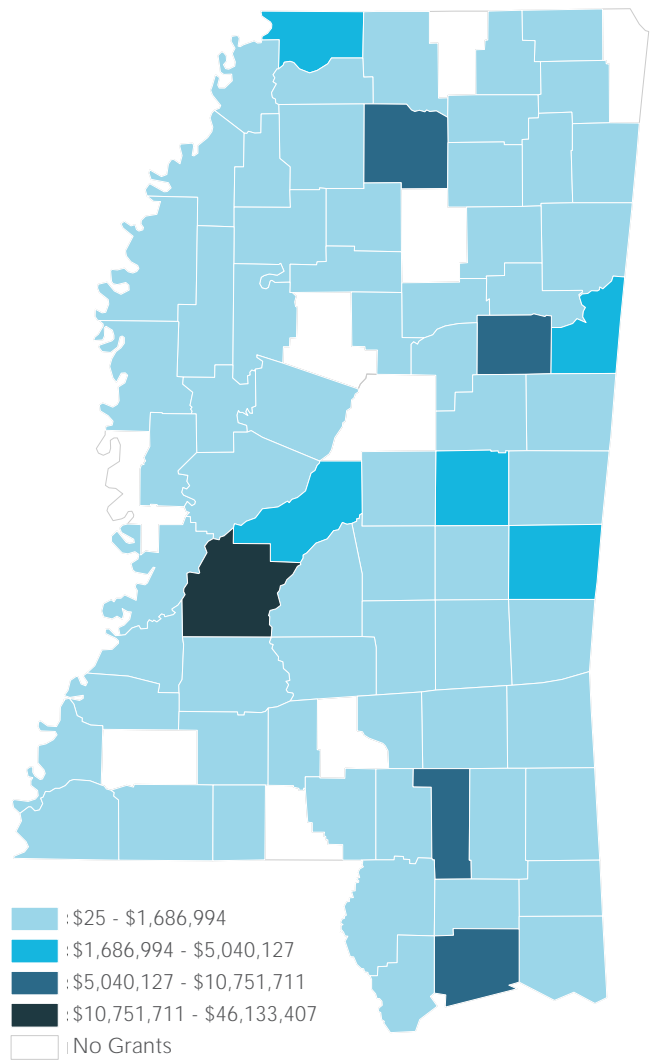
DISTRICT	2012			2016		
	GRANT \$ PAID	% OF TOTAL	ASSETS	GRANT \$ PAID	% OF TOTAL	ASSETS
1	\$28,095,495	30.9%	\$215,991,042	\$27,202,149	28.6%	\$295,453,377
2	\$5,946,367	6.5%	\$103,515,215	\$4,617,826	4.9%	\$82,642,535
3	\$38,419,984	42.2%	\$745,495,580	\$49,443,564	52.0%	\$966,766,035
4	\$16,624,666	18.3%	\$163,305,068	\$13,784,451	14.5%	\$198,317,739
NA	\$1,899,693	2.1%	\$28,457,230			
TOTAL	\$90,986,205	100.0%	\$1,256,764,135	\$95,047,990	100.0%	\$1,543,179,686

The maps below contrast the total grant dollars that were paid by foundations in each county and the grant dollars received by recipient organizations in each county. The top five counties in total giving were Hinds (\$32.1 million), Lee (\$12.9 million), Madison (\$10.8 million), Lafayette (\$8.5 million), and Lauderdale (\$5.7 million). The top five counties in grant dollars received were Hinds (\$46.1 million), Lafayette (\$10.8 million), Harrison (\$5.8 million), Oktibbeha (\$5.8 million), and Forrest (\$5.6 million).

**FIGURE 11: GRANT DOLLARS
AWARDED BY COUNTY OF
MISSISSIPPI FOUNDATIONS, 2016**



**FIGURE 12: GRANT DOLLARS
RECEIVED BY COUNTY OF
MISSISSIPPI RECIPIENTS, 2016**



GRANTMAKING PUBLIC CHARITIES

Public charities are a significant part of the philanthropic landscape in Mississippi, not only as recipients but as grantmakers. Our dataset includes a sample of 88 key grantmaking public charities. Although this sample is not entirely representative of grantmaking public charities in Mississippi, these charities accounted for 69% of all grant dollars given by Mississippi grantmakers and 66% of assets held by Mississippi grantmakers. Tables 9 and 10 show the top 10 Mississippi Grantmaking public charities in total giving and assets.

FIGURE 13: GRANTMAKING PUBLIC CHARITIES

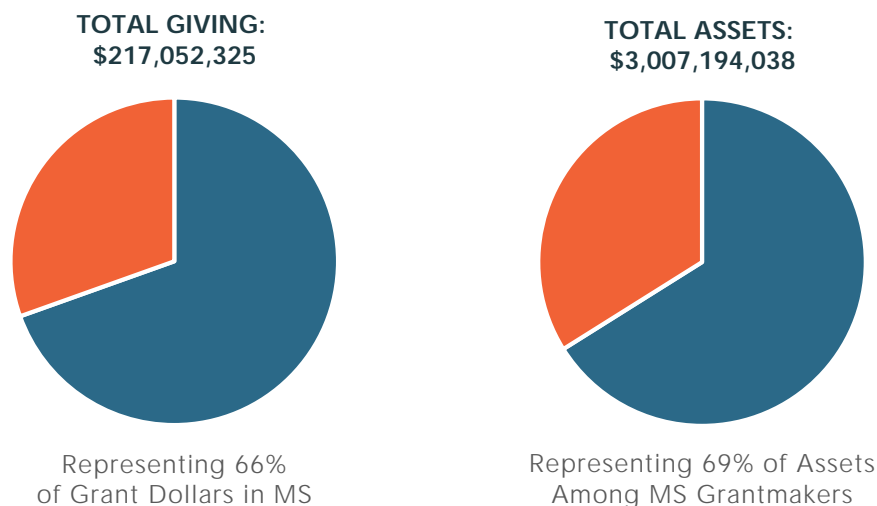


TABLE 9: TOP 10 MISSISSIPPI PUBLIC CHARITY FOUNDATIONS BY TOTAL GIVING, 2016

FOUNDATION NAME	CITY	COUNTY	TOTAL GIVING
Mississippi State University Foundation, Inc.	Mississippi State	Oktibbeha	\$38,251,475
Mississippi State University Educational Building Corp.	Mississippi State	Oktibbeha	\$31,245,608
University of Mississippi Foundation	Oxford	Lafayette	\$28,578,276
Medical Foundation Inc	Meridian	Lauderdale	\$24,620,379
UMAA Foundation	Oxford	Lafayette	\$19,659,325
Robert M. Hearin Support Foundation	Jackson	Hinds	\$10,428,063
Southern Mississippi Planning and Development District, Inc.	Gulfport	Harrison	\$9,379,287
Delta Health Alliance, Inc.	Stoneville	Washington	\$9,123,357
The University of Southern Mississippi Foundation	Hattiesburg	Forrest	\$8,382,108
Mr. & Mrs. E. H. Sumners Foundation	Jackson	Hinds	\$3,701,166

TABLE 10: TOP 10 MISSISSIPPI PUBLIC CHARITY FOUNDATIONS BY TOTAL ASSETS, 2016

FOUNDATION NAME	CITY	COUNTY	TOTAL ASSETS
Mississippi State University Foundation, Inc.	Mississippi State	Oktibbeha	\$471,149,018
University of Mississippi Foundation	Oxford	Lafayette	\$468,239,840
Mississippi State University Educational Building Corp.	Mississippi State	Oktibbeha	\$316,415,683
Medical Foundation Inc	Meridian	Lauderdale	\$307,138,775
St. Dominic Health Services, Inc.	Jackson	Hinds	\$244,533,462
Robert M. Hearin Support Foundation	Jackson	Hinds	\$187,215,846
The Joseph C. Bancroft Charitable and Educational Fund	McComb	Pike	\$186,862,515
UMAA Foundation	Oxford	Lafayette	\$181,812,070
Woodward Hines Education Foundation*	Jackson	Hinds	\$161,138,379
The University of Southern Mississippi Foundation	Hattiesburg	Forrest	\$112,511,490

*Based on 2017 tax information

FIGURE 14: TOTAL ASSETS OF MISSISSIPPI GRANTMAKING CHARITIES, 2016

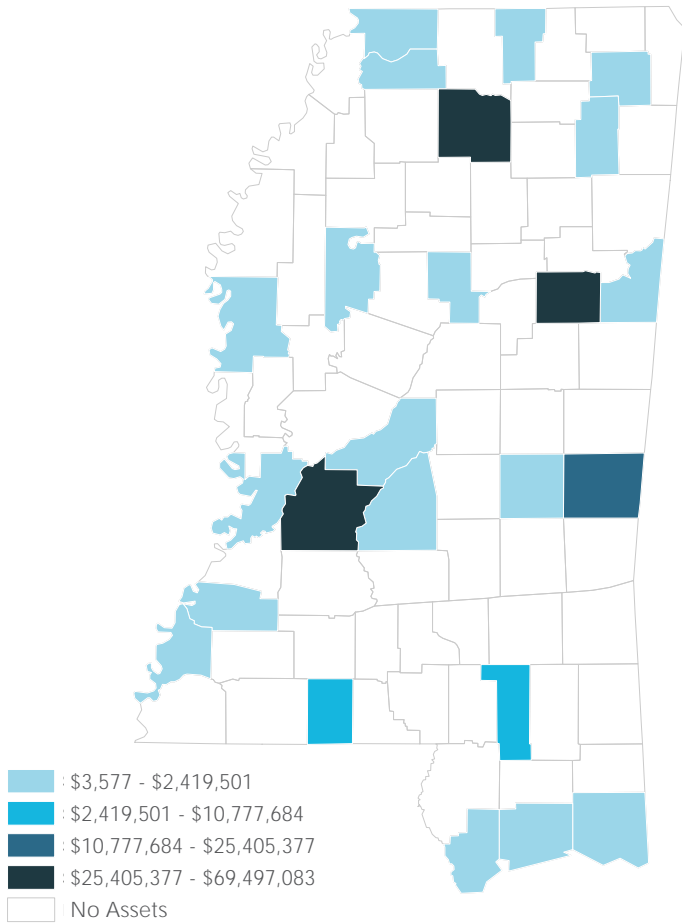
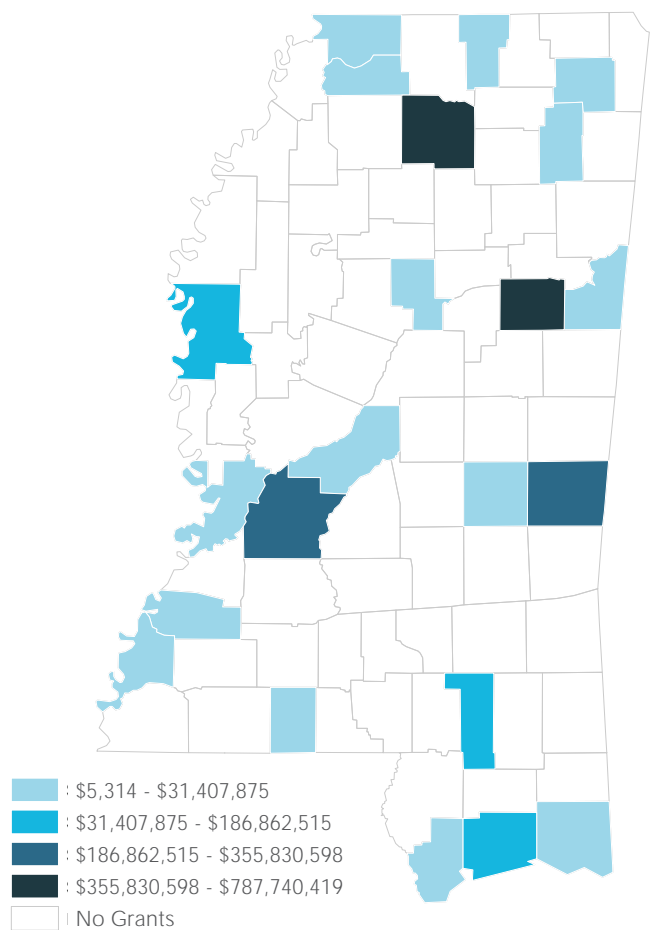


FIGURE 15: TOTAL GIVING BY MISSISSIPPI GRANTMAKING CHARITIES, 2016



TOP 3 COUNTIES IN GIVING FROM PUBLIC CHARITIES

GIVING **% OF TOTAL MS PUBLIC CHARITY GIVING**

OKTIBEHHA

\$69.5M

Mississippi State University Foundation, Inc.	\$38,251,475	17.62%
Mississippi State University Educational Building Corp.	\$31,245,608	14.40%
United Way of North Central Mississippi Inc.	\$133,000	0.06%

LAFAYETTE

\$48.3M

University of Mississippi Foundation	\$28,578,276	13.17%
UMAA Foundation	\$19,659,325	9.06%
Mid-South Housing Foundation	\$372,451	0.17%

LAUDERDALE

\$25.4M

Medical Foundation Inc	\$24,620,379	11.34%
United Way of East Mississippi, Inc.	\$411,160	0.19%
Anderson Support and Development Foundation, Inc.	\$369,841	17%

SPOTLIGHT ON UNITED WAYS OF MISSISSIPPI

United Way represents a network of over 1,200 charitable organizations across the United States. The 19 United Ways of Mississippi are an important source of grantmaking. Through programs such as their Community Impact Grants, United Ways provide support to programs and services that promote the education, health, and financial stability of Mississippians. Collectively, in 2016, United Ways of Mississippi gave over \$9.1 million in grants (Table 11). This represents 9% of all grantmaking in the Mississippi (excluding other public charities).

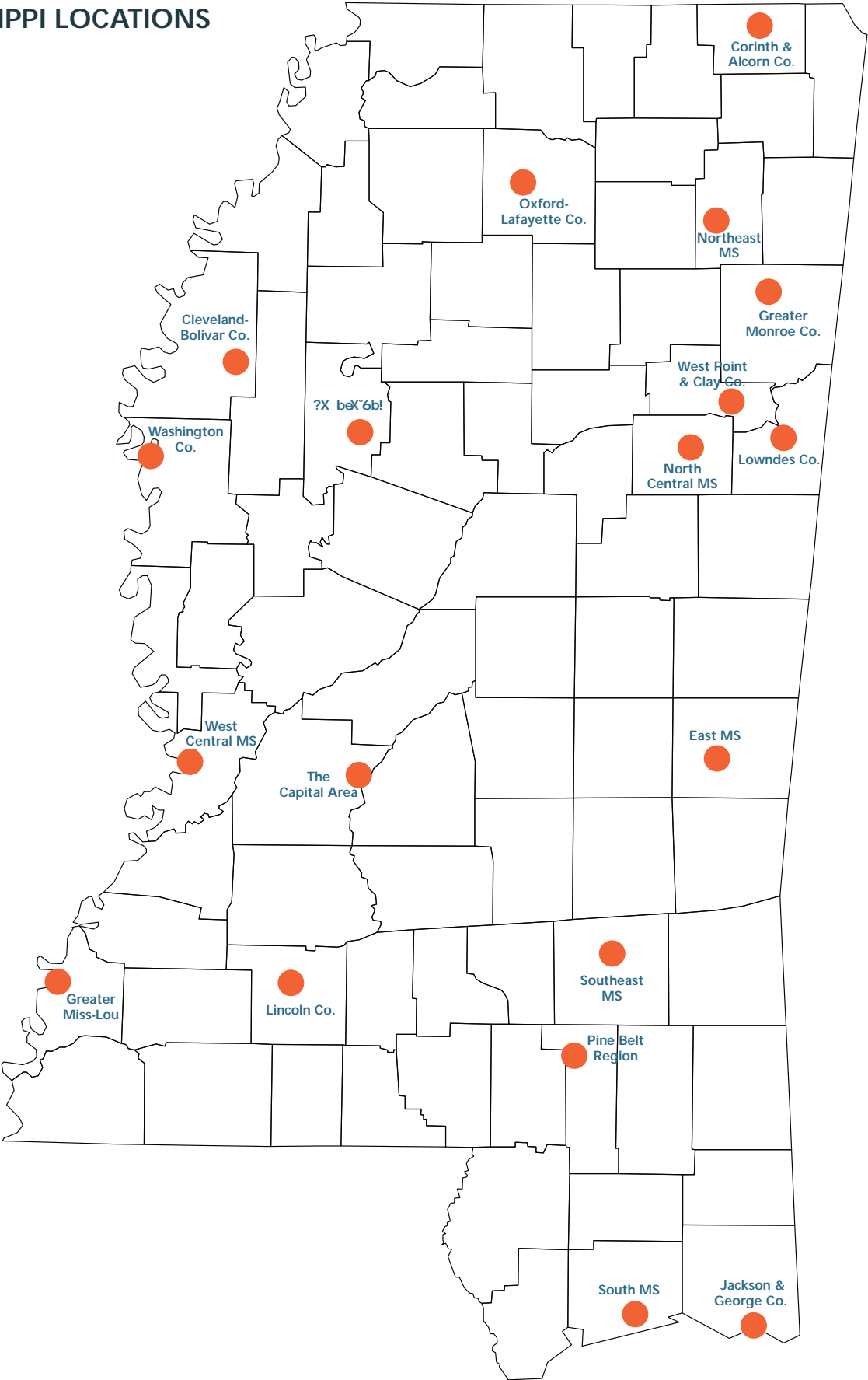
	2012	2016
Total Mississippi United Way Giving	\$10,217,770	\$9,127,152
Total Mississippi Foundation Giving	\$90,986,205	\$95,047,990
Combined Giving	\$101,203,975	\$104,175,142
MS UW as % of Combined Giving*	10.1%	8.8%

*Note: excluding other public charities

TABLE 11: TOTAL GRANT DOLLARS GIVEN BY UNITED WAYS OF MISSISSIPPI

UNITED WAYS OF MISSISSIPPI	GIVING	ASSETS
United Way of Greater Monroe County	\$30,500	\$1,684,318
United Way of Southeast Mississippi	\$712,607	\$3,436,720
United Way for Jackson & George Counties	\$1,523,154	\$462,394
United Way of Cleveland-Bolivar County	\$109,474	\$1,748,402
United Way of Corinth and Alcorn County	\$279,893	\$2,380,628
United Way of East Mississippi	\$411,160	\$201,406
United Way of Leflore County	\$183,083	\$419,030
United Way of Lincoln County	\$89,679	\$840,008
United Way of Lowndes County	\$495,997	\$88,767
United Way of North Central Mississippi	\$133,000	\$5,314
United Way of Northeast Mississippi	\$1,557,468	\$51,002
United Way of Oxford-Lafayette County	\$372,451	\$180,308
United Way of South Mississippi	\$1,529,977	\$175,718
United Way of the Capital Area	\$392,250	\$626,897
United Way of the Greater Miss-Lou	\$81,541	\$714,824
United Way of the Pine Belt Region	\$458,165	\$3,352,772
United Way of Washington County	\$246,372	\$376,173
United Way of West Central Mississippi	\$420,474	\$2,046,058
United Way of West Point & Clay County	\$99,907	\$126,484
Total	\$9,127,152	\$18,917,223

UNITED WAYS OF
MISSISSIPPI LOCATIONS



ENDOW MISSISSIPPI

The Endow Mississippi Program is a legislative initiative passed during the 2019 legislative session which provides a tax credit for charitable gifts made by individuals, businesses, and organization to endowed funds held by community foundations in Mississippi.

- Authorizes up to \$500,000 in tax credits annually for five years
- Each tax credit is equal to 25% of qualifying endowment gifts
- Qualifying gifts include those ranging from \$1,000 to \$200,000 made to community foundation endowments.

ENDOW MISSISSIPPI BY THE NUMBERS (AS OF AUGUST 20, 2019)

7 community foundations have received eligible gifts

75 eligible gifts ranging from \$1,000 to \$200,000 made to community foundations

\$1.444 million in qualifying donations

\$360,898 dollars in Tax Credits (72% of annual maximum)

TABLE 12: SUMMARY STATISTICS FOR ENDOW MISSISSIPPI FOUNDATIONS, JUNE 10-AUGUST 20, 2019

COMMUNITY FOUNDATION	NUMBER OF GIFTS	% OF GIFTS	GIFTS RECEIVED	% OF AMOUNTS RECEIVED	TENTATIVE AMOUNT OF CREDITS ALLOCATED
CF of East Mississippi	10	13.33%	\$167,500.00	11.60%	\$41,875.00
CF of Northwest MS	8	10.67%	\$77,500.00	5.37%	\$19,375.00
CF of Washington Co.	25	33.33%	\$120,750.00	8.36%	\$30,187.50
CF for Mississippi	3	4.00%	\$206,782.50	14.32%	\$51,695.63
CREATE Foundation	20	26.67%	\$430,460.58	29.82%	\$107,615.15
Gulf Coast CF	2	2.67%	\$3,500.00	0.24%	\$875.00
Pinebelt Foundation	7	9.33%	\$437,100.00	30.28%	\$109,275.00
Total	75	100.00%	\$1,443,593.08	100.00%	\$360,898.27

METHODOLOGY

DATA SOURCE

Grants information come from Candid's database of all publishable grants, foundation administered programs, program-related investments, and grants to individuals. Sources of grants data include IRS returns (like IRS Form-990 and Form 990-PF) and information reported directly to Candid through their Electronic Reporting Program from private and public grantmaking foundations. From this database, separate grantmaker- and grants-level data were provided to researchers at the Social Science Research Center at Mississippi State University for analysis. The grantmaker-level file consists of 299 foundations with a recorded dollar amount for either grant giving or assets. The grant-level analysis is based on a sample of approximately 1,900 grants from Mississippi Foundations and an additional 2,400 grants from other U.S. based foundations. Importantly, this sample of grants does not necessarily capture the entire universe of grants made by Mississippi foundations included in this report, therefore totals from the grantmaker analysis and the grants-level analysis (e.g., grantmaking by subject area) may not match. The Mississippi grants dataset accounts for 63% of grant dollars from Mississippi-based foundations. An analysis of grantmaking public charities is reported separately and included a sample of 88 Mississippi-based charities.

TIME PERIOD

The time period for the grants collected is 2016. For the foundation-level analyses, where 2016 data were not available, foundations' most recently available data were used. Of the 299 active foundations, approximately 90% were 2016, nearly 6% were 2014/2015.

GRANTS CODING

Candid indexes all organizations and transactions according to the Philanthropy Classification System (PCS), a taxonomy developed by Candid based originally on the National Taxonomy of Exempt Entities (NTEE) and expanded based on Candid's experience capturing and indexing the work of the sector on a global scale. The codes in the PCS describe organizations initializing the transaction, the transaction itself, and the recipient of the transaction. Codes are assigned according to five facets: subject, population served, organization type, transaction type, and support strategy. The PCS is reviewed periodically and adjusted with additions, subtractions, or definitional changes when deemed necessary by a team of Candid staff.

Codes applied to organizations are assigned by Candid's Data Management division staff based on available information on the mission of the grantmaker or recipient. Codes applied to transactions are assigned using a multi-stage process developed by Candid based on descriptions of the activity or program funded that have been provided by the awarding organization. Candid standardizes and loads this information into the data management system where first, a rules-based rubric applies relevant codes to the simplest and most common types of grants that provide little detail (e.g. "For general support"). For transactions with richer descriptions, machine-learning algorithms then evaluate the information and assign a set of applicable subject, population, transaction type, support strategy facet codes based on a statistical confidence level determined through rigorous testing by Candid's data scientists in the Application Development division. The models for these assessments have been trained using Candid's extensive historical database of human-coded transactions, comprising millions of grants that were indexed prior to the adoption of our automated procedures. Grants with the highest monetary value (\$250,000 or more) awarded by a subset of 1,000 larger U.S. grantmakers are reviewed by staff in Candid's Data Management division for accuracy.

APPENDIX A:

TOP 50 GRANTMAKERS BY TOTAL GIVING

MISSISSIPPI'S 50 LARGEST GRANTMAKERS RANKED BY TOTAL GIVING, 2016

	GRANTMAKER	TOTAL GIVING	CITY
1.	CREATE Foundation	\$8,724,346	Tupelo
2.	Mississippi Common Fund Trust	\$6,565,000	Oxford
3.	The Luckyday Foundation	\$4,429,006	Jackson
4.	The Bower Foundation, Inc.	\$4,291,086	Ridgeland
5.	Blue Cross & Blue Shield of Mississippi Foundation	\$4,178,474	Flowood
6.	Oakwood Foundation Charitable Trust	\$3,430,000	Tupelo
7.	The Gertrude C. Ford Foundation, Inc.	\$3,210,893	Ridgeland
8.	The Riley Foundation	\$2,896,800	Meridian
9.	Ergon Foundation, Inc.	\$2,748,000	Jackson
10.	Wheaton Foundation	\$2,707,669	Jackson
11.	Selby and Richard McRae Foundation, Inc.	\$2,687,396	Jackson
12.	Community Foundation	\$2,500,000	Jackson
13.	Community Foundation for Mississippi	\$2,443,259	Jackson
14.	The Chisholm Foundation	\$2,247,800	Laurel
15.	Asbury Foundation of Hattiesburg, Inc.	\$2,209,649	Hattiesburg
16.	The Robert M. Hearin Foundation	\$2,055,133	Jackson
17.	Gulf Coast Community Foundation	\$2,028,948	Gulfport
18.	The Phil Hardin Foundation	\$1,973,143	Meridian
19.	Pinebelt Foundation	\$1,688,461	Hattiesburg
20.	Maddox Foundation	\$1,644,900	Hernando
21.	BBB Foundation	\$1,398,249	Columbus
22.	Community Foundation of Northwest Mississippi	\$1,197,126	Hernando
23.	Delta Research Foundation	\$1,065,638	Stoneville
24.	Edwin E. and Ruby C. Morgan Foundation Inc.	\$830,000	Flowood
25.	Walker Foundation	\$789,700	Ridgeland
26.	Feild Co-Operative Association Inc.	\$763,535	Jackson
27.	Biloxi Regional Medical Center Inc	\$706,350	Biloxi
28.	The Dick Molpus Foundation	\$674,478	Jackson
29.	Regions Foundation	\$670,000	Jackson
30.	Hugh and Jill Freeze Foundation	\$604,921	Oxford
31.	Lower Pearl River Valley Foundation	\$589,932	Picayune
32.	Mississippi Power Foundation Inc.	\$546,470	Gulfport
33.	Parker Lifeshare Foundation	\$527,000	Madison
34.	Vicksburg Medical Foundation	\$521,949	Vicksburg
35.	Old Ladies Home Association	\$510,553	Jackson
36.	Leo W. Seal, Jr. Family Foundation	\$508,990	Bay Saint Louis
37.	Warren A. Hood, Jr. Family Foundation	\$500,000	Hattiesburg
38.	C Spire Wireless Foundation	\$473,167	Ridgeland
39.	The Algernon Sydney Sullivan Foundation	\$472,110	Oxford
40.	Salt and Light Foundation	\$456,150	Kosciusko
41.	Delta Regional Foundation	\$442,740	Clinton
42.	Mississippi Hospital Association Health Research and Educational Foundation	\$402,112	Madison
43.	The Pruet Foundation	\$399,706	Jackson
44.	Carothers Construction Charitable Foundation	\$395,708	Taylor
45.	James W. Hood Family Foundation	\$381,000	Jackson
46.	Graeber Foundation	\$352,598	Marks
47.	Family Care Foundation	\$342,300	Hattiesburg
48.	Fountain Family Foundation	\$339,250	Jackson
49.	Foundation For The Mid South Inc.	\$320,148	Jackson
50.	Bancorpsouth Tupelo	\$313,004	Tupelo

APPENDIX B:

TOP 50 GRANTMAKERS BY ASSETS

MISSISSIPPI'S 50 LARGEST GRANTMAKERS RANKED BY ASSETS, 2016

	GRANTMAKER	ASSETS	CITY
1.	The Luckyday Foundation	\$115,797,965	Jackson
2.	CREATE Foundation	\$101,840,264	Tupelo
3.	Blue Cross & Blue Shield of Mississippi Foundation	\$97,636,028	Flowood
4.	The Bower Foundation, Inc.	\$89,553,165	Ridgeland
5.	The Riley Foundation	\$69,671,880	Meridian
6.	Ergon Foundation, Inc.	\$54,966,078	Jackson
7.	Maddox Foundation	\$54,699,438	Hernando
8.	The Gertrude C. Ford Foundation, Inc.	\$54,555,179	Ridgeland
9.	The Phil Hardin Foundation	\$52,335,470	Meridian
10.	Community Foundation for Mississippi	\$46,072,320	Jackson
11.	The Robert M. Hearin Foundation	\$45,516,483	Jackson
12.	Old Ladies Home Association	\$43,724,483	Jackson
13.	The Community Foundation, Inc.	\$42,928,691	Jackson
14.	The Chisholm Foundation	\$37,133,546	Laurel
15.	Asbury Foundation of Hattiesburg, Inc.	\$32,276,403	Hattiesburg
16.	Selby and Richard McRae Foundation, Inc.	\$23,835,863	Jackson
17.	Edwin E. and Ruby C. Morgan Foundation Inc.	\$23,360,693	Flowood
18.	Feild Co-Operative Association Inc.	\$21,711,078	Jackson
19.	Gulf Coast Community Foundation	\$21,708,590	Gulfport
20.	Purvis Grange Foundation, Inc.	\$21,023,107	Vicksburg
21.	Lower Pearl River Valley Foundation	\$19,284,705	Picayune
22.	Community Foundation of Northwest Mississippi	\$17,725,540	Hernando
23.	Seashore Campgrounds Retirement Home Inc.	\$17,252,820	Tupelo
24.	Mississippi Power Foundation Inc.	\$16,412,828	Gulfport
25.	Biloxi Regional Medical Center Inc.	\$16,080,056	Biloxi
26.	Gilmore Sanitarium, Inc.	\$15,729,631	Amory
27.	Foundation For The Mid South Inc	\$15,516,287	Jackson
28.	The Algernon Sydney Sullivan Foundation	\$14,628,555	Oxford
29.	Leo W. Seal, Jr. Family Foundation	\$14,129,086	Bay Saint Louis
30.	James W. Hood Family Foundation	\$14,044,337	Jackson
31.	Walker Foundation	\$13,916,060	Ridgeland
32.	Vicksburg Medical Foundation	\$12,133,539	Vicksburg
33.	Regions Foundation	\$11,142,054	Jackson
34.	Oakwood Foundation Charitable Trust	\$11,002,452	Tupelo
35.	Parker Lifeshare Foundation	\$10,533,881	Madison
36.	Dr. and Mrs. R. Faser Triplett Foundation	\$10,157,150	Madison
37.	L. D. Hancock Foundation, Inc.	\$9,834,840	Tupelo
38.	Warren A. Hood, Jr. Family Foundation	\$9,678,533	Hattiesburg
39.	Graeber Foundation	\$7,536,825	Marks
40.	The Pruet Foundation	\$7,535,845	Jackson
41.	Homer Skelton Charitable Foundation	\$7,356,465	Olive Branch
42.	H. F. McCarty, Jr. Family Foundation	\$7,218,529	Jackson
43.	Fountain Family Foundation	\$7,062,931	Jackson
44.	Community Foundation Of East MS	\$5,757,902	Meridian
45.	Phillips Foundation	\$5,022,493	Columbus
46.	William Robert Baird Charitable Trust	\$4,638,736	Meridian
47.	Pinebelt Foundation	\$4,605,949	Hattiesburg
48.	Amory Outreach Foundation Inc.	\$4,589,101	Amory
49.	The Florence Foundation	\$4,481,833	Moss Point
50.	Burrus Foundation, Inc.	\$3,939,410	Greenville

APPENDIX C:

MS GRANTMAKING BY COUNTY

TOTAL GRANTMAKING, ASSETS AND NUMBER OF GRANTMAKERS BY MISSISSIPPI COUNTY, 2016

COUNTY	TOTAL GIVING	RANK	% OF TOTAL	TOTAL ASSETS	RANK	% OF TOTAL	NUMBER
Adams	\$184,850	25	0.2%	\$3,716,280	20	0.2%	4
Amite	\$0	42	0.0%	\$234,725	39	0.0%	1
Attala	\$456,150	17	0.5%	\$3,646,138	21	0.2%	1
Bolivar	\$234,500	23	0.2%	\$3,389,153	22	0.2%	2
Chickasaw	\$20,580	36	0.0%	\$504,886	35	0.0%	1
Claiborne	\$5,000	39	0.0%	\$364,739	36	0.0%	1
Clay	\$38,597	33	0.0%	\$1,951,715	27	0.1%	1
Covington	\$28,662	35	0.0%	\$720,583	30	0.0%	2
DeSoto	\$3,015,823	8	3.2%	\$79,800,376	5	5.2%	4
Forrest	\$4,975,966	6	5.2%	\$49,034,899	7	3.2%	12
Franklin	\$1,000	40	0.0%	\$7,027	48	0.0%	1
Hancock	\$525,490	16	0.6%	\$14,470,287	14	0.9%	2
Harrison	\$3,775,330	7	4.0%	\$64,022,368	6	4.1%	12
Hinds	\$32,130,069	1	33.8%	\$621,575,254	1	40.3%	79
Holmes	\$275,850	21	0.3%	\$1,216,414	28	0.1%	3
Humphreys	\$94,716	31	0.1%	\$2,091,496	25	0.1%	1
Itawamba	\$19,721	37	0.0%	\$92,660	42	0.0%	2
Jackson	\$650,636	14	0.7%	\$7,929,841	17	0.5%	6
Jones	\$2,976,681	9	3.1%	\$39,883,140	8	2.6%	9
Lafayette	\$8,512,739	4	9.0%	\$22,967,502	10	1.5%	10
Lamar	\$0	43	0.0%	\$153,086	40	0.0%	2
Lauderdale	\$5,749,760	5	6.0%	\$139,527,053	4	9.0%	11
Leake	\$0	44	0.0%	\$27,938	44	0.0%	1
Lee	\$12,867,741	2	13.5%	\$147,397,425	3	9.6%	12
Leflore	\$381,331	19	0.4%	\$7,457,811	18	0.5%	7
Lincoln	\$47,615	32	0.1%	\$33,298	43	0.0%	2
Lowndes	\$2,053,567	10	2.2%	\$14,217,812	15	0.9%	14
Madison	\$10,768,059	3	11.3%	\$196,103,257	2	12.7%	35
Marion	\$105,000	29	0.1%	\$629,503	32	0.0%	1
Marshall	\$30,500	34	0.0%	\$644,161	31	0.0%	3
Monroe	\$412,597	18	0.4%	\$21,629,088	12	1.4%	4
Newton	\$0	45	0.0%	\$7,700	47	0.0%	1
Oktibbeha	\$235,260	22	0.2%	\$1,164,795	29	0.1%	2
Pearl River	\$775,348	12	0.8%	\$22,194,615	11	1.4%	3
Pike	\$19,000	38	0.0%	\$585,535	33	0.0%	1
Pontotoc	\$130	41	0.0%	\$12,922	46	0.0%	1
Prentiss	\$95,654	30	0.1%	\$3,922,723	19	0.3%	3
Quitman	\$731,600	13	0.8%	\$14,552,330	13	0.9%	7
Rankin	\$279,289	20	0.3%	\$2,953,846	23	0.2%	5
Smith	\$0	46	0.0%	\$139,153	41	0.0%	1
Tippah	\$0	47	0.0%	\$16,078	45	0.0%	1
Tunica	\$149,350	26	0.2%	\$561,416	34	0.0%	3
Union	\$0	48	0.0%	\$331,380	37	0.0%	1
Warren	\$619,449	15	0.7%	\$34,517,894	9	2.2%	6
Washington	\$1,369,952	11	1.4%	\$12,199,230	16	0.8%	11
Winston	\$134,500	27	0.1%	\$1,964,649	26	0.1%	1
Yalobusha	\$112,830	28	0.1%	\$270,337	38	0.0%	3
Yazoo	\$187,098	24	0.2%	\$2,345,168	24	0.2%	3
Total	\$95,047,990			\$1,543,179,686			299

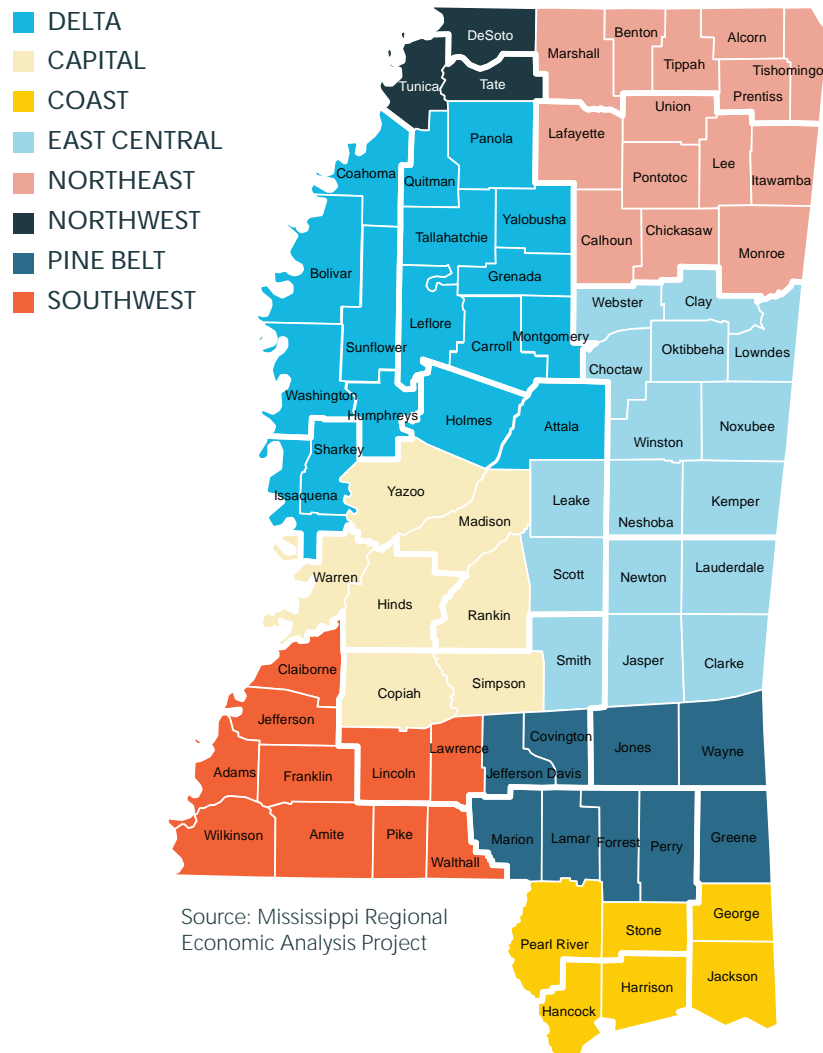
Note: A total of 34 counties had no grants or assets.

APPENDIX D:

MISSISSIPPI GRANTMAKING BY REGION

TOTAL GRANTMAKING, ASSETS AND NUMBER OF GRANTMAKERS BY GEOGRAPHIC REGION, 2016

REGION	TOTAL GIVING	RANK	% OF TOTAL	TOTAL ASSETS	RANK	% OF TOTAL	NUMBER
Capital	\$43,983,964	1	46.3%	\$857,495,419	1	55.6%	128
Northeast	\$21,959,662	2	23.1%	\$197,518,825	2	12.8%	38
East Central	\$8,211,684	3	8.6%	\$159,000,815	3	10.3%	32
Pine Belt	\$8,086,309	4	8.5%	\$90,421,211	5	5.9%	26
Coast	\$5,726,804	5	6.0%	\$108,617,111	4	7.0%	23
Delta	\$3,656,929	6	3.8%	\$44,822,909	7	2.9%	35
Northwest	\$3,165,173	7	3.3%	\$80,361,792	6	5.2%	7
Southwest	\$257,465	8	0.3%	\$4,941,604	8	0.3%	10
Total	\$95,047,990			\$1,543,179,686			299



APPENDIX E:

TOP 15 MISSISSIPPI PUBLIC CHARITIES BY GRANTS PAID AND ASSETS

MISSISSIPPI'S 15 LARGEST PUBLIC CHARITIES RANKED BY TOTAL GRANTS, 2016

	GRANTMAKER	TOTAL GIVING	CITY
1.	Mississippi State University Foundation, Inc.	\$38,251,475	Mississippi State
2.	Mississippi State University Educational Building Corp.	\$31,245,608	Mississippi State
3.	University of Mississippi Foundation	\$28,578,276	Oxford
4.	Medical Foundation Inc	\$24,620,379	Meridian
5.	UMAA Foundation	\$19,659,325	Oxford
6.	Robert M. Hearin Support Foundation	\$10,428,063	Jackson
7.	Southern Mississippi Planning and Development District, Inc.	\$9,379,287	Gulfport
8.	Delta Health Alliance, Inc.	\$9,123,357	Stoneville
9.	The University of Southern Mississippi Foundation	\$8,382,108	Hattiesburg
10.	Mr. & Mrs. E. H. Sumners Foundation	\$3,701,166	Jackson
11.	Woodward Hines Education Foundation	\$3,545,099	Jackson
12.	St. Dominic Health Services, Inc.	\$2,502,113	Jackson
13.	Northeast Planning & Development District	\$2,246,596	Booneville
14.	United Way of Northeast Mississippi	\$1,557,468	Tupelo
15.	University of the Southern	\$1,533,441	Hattiesburg

MISSISSIPPI'S 15 LARGEST PUBLIC CHARITIES RANKED BY ASSETS, 2016

	GRANTMAKER	ASSETS	CITY
1.	Mississippi State University Foundation, Inc.	\$471,149,018	Mississippi State
2.	University of Mississippi Foundation	\$468,239,840	Oxford
3.	Mississippi State University Educational Building Corp.	\$316,415,683	Mississippi State
4.	Medical Foundation Inc	\$307,138,775	Meridian
5.	St. Dominic Health Services, Inc.	\$244,533,462	Jackson
6.	Robert M. Hearin Support Foundation	\$187,215,846	Jackson
7.	The Joseph C. Bancroft Charitable and Educational Fund	\$186,862,515	McComb
8.	UMAA Foundation	\$181,812,070	Oxford
9.	Woodward Hines Education Foundation	\$161,138,379	Jackson
10.	The University of Southern Mississippi Foundation	\$112,511,490	Hattiesburg
11.	Mr. & Mrs. E. H. Sumners Foundation	\$64,744,421	Jackson
12.	Rush Care Inc.	\$24,603,275	Meridian
13.	Southern Mississippi Planning and Development District, Inc.	\$24,353,800	Gulfport
14.	Northeast Planning & Development District	\$23,089,334	Booneville
15.	Mid-South Housing Foundation	\$20,913,587	Oxford

FUNDERS

Blue Cross & Blue Shield of Mississippi Foundation	Mississippi Development Authority	United Way of South Mississippi
Calhoun County Community Foundation	Mississippi Humanities Council	United Way - Southeast Mississippi
CARE (Corinth-Alcorn Reaching for Excellence)	North Monroe Community Foundation	United Way of the Capital Area Inc
Charles L. Young, Sr. Foundation	PACE (People Achieving Community Excellence)	United Way of West Central Mississippi
Community Foundation Of East MS	South Monroe Community Foundation	W. K. Kellogg Foundation
Community Foundation of Greater Memphis	SPAR (Starkville Oktibbeha Achieving Results)	Walker Foundation
Community Foundation of Northwest Mississippi	Tallahatchie River Foundation	West Point Community Foundation
Community Foundation of Washington County	TARGET (Tippah and Ripley Growing Excellent Together)_	Women's Foundation of Mississippi
Community Foundation for Mississippi	The Bower Foundation, Inc.	Woodward Hines Education Foundation
CREATE Foundation	The Casey Family Program	
FIRST (Friends of Itawamba Responding to Secure Tomorrow)	The Chisholm Foundation	
Foundation For The Mid South Inc.	The Dick Molpus Foundation	
Gulf Coast Community Foundation	The Pine Belt Foundation	
LOFT (Lafayette-Oxford Foundation for Tomorrow)	The Phil Hardin Foundation	
Lowndes Community Foundation	Tupelo/Lee County Community Foundation	
Mississippi Arts Commission	UNITE (Union County-New Albany Initiative to Excell)	
Mississippi Commission on Volunteer Service	United Way of East Mississippi	
Mississippi Delta National Heritage Area	United Way of Jackson and George Counties	
	United Way of Lowndes County, Inc.	
	United Way of Northeast Mississippi	



Box 1120
Jackson, MS 39215-1120

601.968.0061
alliancems.org

In 2016, grantmaking members of the Mississippi Alliance of Non-Profits and Philanthropy gave nearly \$28 million in grants, representing approximately 30% of all private foundation grantmaking in Mississippi.



Box 1120
Jackson, MS 39215-1120

601.968.0061
alliancems.org



1 Research Blvd, Suite 102A
Starkville, MS 39759-7810

662.325.7127
ssrc.msstate.edu

32 Old Slip, 24th Floor
New York, NY 10005